

Anti-IGFBP3 Antibody
Rabbit polyclonal antibody to IGFBP3
Catalog # AP60321**Specification**

Anti-IGFBP3 Antibody - Product Information

Application	WB, IH
Primary Accession	P17936
Other Accession	P47878
Reactivity	Human, Mouse, Rat, Monkey, Pig, Bovine
Host	Rabbit
Clonality	Polyclonal
Calculated MW	31674

Anti-IGFBP3 Antibody - Additional Information**Gene ID** 3486**Other Names**

IBP3; Insulin-like growth factor-binding protein 3; IBP-3; IGF-binding protein 3; IGFBP-3

Target/Specificity

Recognizes endogenous levels of IGFBP3 protein.

Dilution

WB~~WB (1/500 - 1/1000), IH (1/50 - 1/200)

IH~~WB (1/500 - 1/1000), IH (1/50 - 1/200)

Format

Liquid in 0.42% Potassium phosphate, 0.87% Sodium chloride, pH 7.3, 30% glycerol, and 0.09% (W/V) sodium azide.

Storage

Store at -20 °C. Stable for 12 months from date of receipt

Anti-IGFBP3 Antibody - Protein Information**Name** IGFBP3**Synonyms** IBP3**Function**

IGF-binding proteins prolong the half-life of the IGFs and have been shown to either inhibit or stimulate the growth promoting effects of the IGFs on cell culture. They alter the interaction of IGFs with their cell surface receptors. Also exhibits IGF-independent antiproliferative and apoptotic effects mediated by its receptor TMEM219/IGFBP-3R. Inhibits the positive effect of humanin on insulin sensitivity (PubMed:19623253). Promotes testicular germ cell apoptosis (PubMed:19952275).

Cellular Location

Secreted.

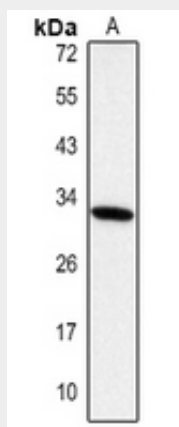
Tissue Location

Expressed by most tissues. Present in plasma.

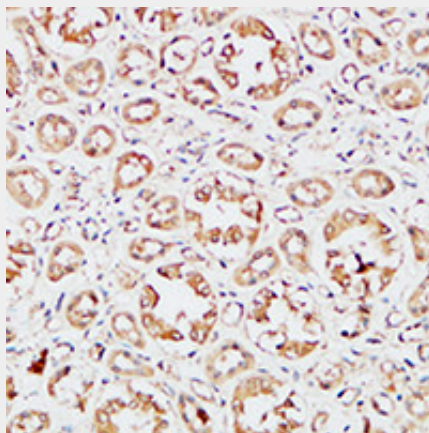
Anti-IGFBP3 Antibody - Protocols

Provided below are standard protocols that you may find useful for product applications.

- [Western Blot](#)
- [Blocking Peptides](#)
- [Dot Blot](#)
- [Immunohistochemistry](#)
- [Immunofluorescence](#)
- [Immunoprecipitation](#)
- [Flow Cytometry](#)
- [Cell Culture](#)

Anti-IGFBP3 Antibody - Images

Western blot analysis of IGFBP3 expression in mouse kidney (A) whole cell lysates.



Immunohistochemical analysis of IGFBP3 staining in human kidney formalin fixed paraffin

embedded tissue section. The section was pre-treated using heat mediated antigen retrieval with sodium citrate buffer (pH 6.0). The section was then incubated with the antibody at room temperature and detected using an HRP conjugated compact polymer system. DAB was used as the chromogen. The section was then counterstained with haematoxylin and mounted with DPX.

Anti-IGFBP3 Antibody - Background

KLH-conjugated synthetic peptide encompassing a sequence within the center region of human IGFBP3. The exact sequence is proprietary.