

Anti-Integrin alpha 8 HC Antibody
Rabbit polyclonal antibody to Integrin alpha 8 HC
Catalog # AP60329**Specification**

Anti-Integrin alpha 8 HC Antibody - Product Information

| | |
|-------------------|---------------------------|
| Application | WB |
| Primary Accession | P53708 |
| Other Accession | A2ARA8 |
| Reactivity | Human, Mouse, Rat, Monkey |
| Host | Rabbit |
| Clonality | Polyclonal |
| Calculated MW | 117474 |

Anti-Integrin alpha 8 HC Antibody - Additional Information**Gene ID** 8516**Other Names**

Integrin alpha-8

Target/Specificity

Recognizes endogenous levels of Integrin alpha 8 HC protein.

Dilution

WB~~WB (1/500 - 1/1000)

Format

Liquid in 0.42% Potassium phosphate, 0.87% Sodium chloride, pH 7.3, 30% glycerol, and 0.09% (W/V) sodium azide.

Storage

Store at -20 °C. Stable for 12 months from date of receipt

Anti-Integrin alpha 8 HC Antibody - Protein Information**Name** ITGA8**Function**

Integrin alpha-8/beta-1 functions in the genesis of kidney and probably of other organs by regulating the recruitment of mesenchymal cells into epithelial structures. It recognizes the sequence R-G-D in a wide array of ligands including TNC, FN1, SPP1 TGFB1, TGFB3 and VTN. NPNT is probably its functional ligand in kidney genesis. Neuronal receptor for TNC it mediates cell-cell interactions and regulates neurite outgrowth of sensory and motor neurons.

Cellular Location

Membrane; Single- pass type I membrane protein. Cell membrane

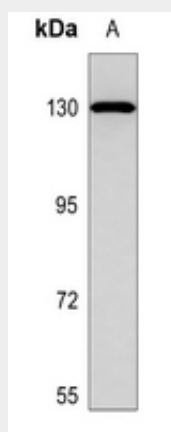
Tissue Location

Expressed in mesenchymal cells, including alveolar myofibroblasts, kidney mesangial cells and hepatic stellate cells and vascular and visceral smooth muscle (at protein level)

Anti-Integrin alpha 8 HC Antibody - Protocols

Provided below are standard protocols that you may find useful for product applications.

- [Western Blot](#)
- [Blocking Peptides](#)
- [Dot Blot](#)
- [Immunohistochemistry](#)
- [Immunofluorescence](#)
- [Immunoprecipitation](#)
- [Flow Cytometry](#)
- [Cell Culture](#)

Anti-Integrin alpha 8 HC Antibody - Images

Western blot analysis of Integrin alpha 8 HC expression in DLD (A) whole cell lysates.

Anti-Integrin alpha 8 HC Antibody - Background

KLH-conjugated synthetic peptide encompassing a sequence within the C-term region of human Integrin alpha 8 HC. The exact sequence is proprietary.