

**Anti-JUNB (pS259) Antibody**  
**Rabbit polyclonal antibody to JUNB (pS259)**  
**Catalog # AP60330**

**Specification**

---

**Anti-JUNB (pS259) Antibody - Product Information**

Application	WB, IP, IHC
Primary Accession	<a href="#">P17275</a>
Other Accession	<a href="#">P09450</a>
Reactivity	Human, Mouse, Rat, Bovine, SARS
Host	Rabbit
Clonality	Polyclonal
Calculated MW	35879

**Anti-JUNB (pS259) Antibody - Additional Information**

**Gene ID** 3726

**Other Names**

Transcription factor jun-B

**Target/Specificity**

KLH-conjugated synthetic peptide encompassing a sequence within the C-term region of human JUNB (pS259). The exact sequence is proprietary.

**Dilution**

WB~~WB (1/500 - 1/1000), IH (1/100 - 1/200), IP (1/10 - 1/100)

IP~~N/A

IHC~~1:100~500

**Format**

Liquid in 0.42% Potassium phosphate, 0.87% Sodium chloride, pH 7.3, 30% glycerol, and 0.09% (W/V) sodium azide.

**Storage**

Store at -20 °C. Stable for 12 months from date of receipt

**Anti-JUNB (pS259) Antibody - Protein Information**

**Name** JUNB

**Function**

Transcription factor involved in regulating gene activity following the primary growth factor response. Binds to the DNA sequence 5'-TGA[GC]TCA-3'. Heterodimerizes with proteins of the FOS family to form an AP-1 transcription complex, thereby enhancing its DNA binding activity to an AP-1 consensus sequence and its transcriptional activity (By similarity).

**Cellular Location**

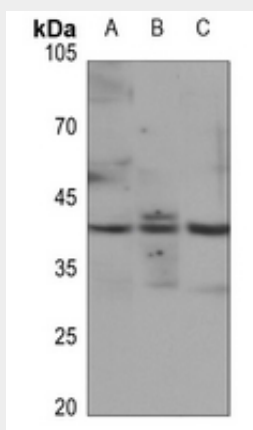
Nucleus.

### Anti-JUNB (pS259) Antibody - Protocols

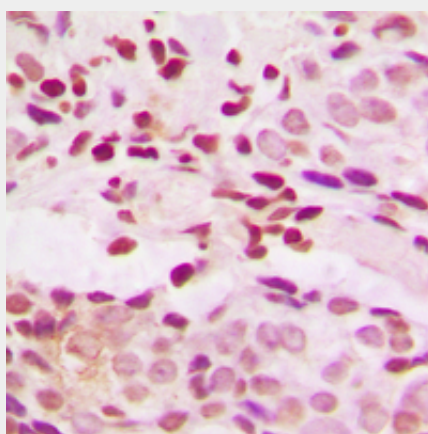
Provided below are standard protocols that you may find useful for product applications.

- [Western Blot](#)
- [Blocking Peptides](#)
- [Dot Blot](#)
- [Immunohistochemistry](#)
- [Immunofluorescence](#)
- [Immunoprecipitation](#)
- [Flow Cytometry](#)
- [Cell Culture](#)

### Anti-JUNB (pS259) Antibody - Images



Western blot analysis of JUNB (pS259) expression in mouse liver (A), mouse kidney (B), rat kidney (C) whole cell lysates.



Immunohistochemical analysis of JUNB (pS259) staining in human breast cancer formalin fixed paraffin embedded tissue section. The section was pre-treated using heat mediated antigen retrieval with sodium citrate buffer (pH 6.0). The section was then incubated with the antibody at room temperature and detected using an HRP conjugated compact polymer system. DAB was used as the chromogen. The section was then counterstained with haematoxylin and mounted with DPX.

**Anti-JUNB (pS259) Antibody - Background**

KLH-conjugated synthetic peptide encompassing a sequence within the C-term region of human JUNB (pS259). The exact sequence is proprietary.