

**Anti-TAU (pS673) Antibody**  
**Rabbit polyclonal antibody to TAU (pS673)**  
**Catalog # AP60338**

**Specification**

---

**Anti-TAU (pS673) Antibody - Product Information**

Application	WB, IF/IC, IHC
Primary Accession	<a href="#">P10636</a>
Other Accession	<a href="#">P10637</a>
Reactivity	Human, Mouse, Rat, Rabbit, Monkey, Pig, Bovine, Dog
Host	Rabbit
Clonality	Polyclonal
Calculated MW	78928

**Anti-TAU (pS673) Antibody - Additional Information**

**Gene ID** 4137

**Other Names**

MAPTL; MTBT1; TAU; Microtubule-associated protein tau; Neurofibrillary tangle protein; Paired helical filament-tau; PHF-tau

**Target/Specificity**

Recognizes endogenous levels of TAU (pS673) protein.

**Dilution**

WB~~WB (1/500 - 1/1000), IH (1/100 - 1/200), IF/IC (1/100 - 1/500)

IF/IC~~N/A

IHC~~1:100~500

**Format**

Liquid in 0.42% Potassium phosphate, 0.87% Sodium chloride, pH 7.3, 30% glycerol, and 0.09% (W/V) sodium azide.

**Storage**

Store at -20 °C. Stable for 12 months from date of receipt

**Anti-TAU (pS673) Antibody - Protein Information**

**Name** MAPT ([HGNC:6893](#))

**Synonyms** MAPTL, MTBT1, TAU

**Function**

Promotes microtubule assembly and stability, and might be involved in the establishment and maintenance of neuronal polarity (PubMed:<a href="http://www.uniprot.org/citations/21985311" target="\_blank">21985311</a>). The C-terminus binds axonal microtubules while the N-terminus

binds neural plasma membrane components, suggesting that tau functions as a linker protein between both (PubMed:<a href="http://www.uniprot.org/citations/21985311" target="\_blank">21985311</a>, PubMed:<a href="http://www.uniprot.org/citations/32961270" target="\_blank">32961270</a>). Axonal polarity is predetermined by TAU/MAPT localization (in the neuronal cell) in the domain of the cell body defined by the centrosome. The short isoforms allow plasticity of the cytoskeleton whereas the longer isoforms may preferentially play a role in its stabilization.

#### Cellular Location

Cytoplasm, cytosol. Cell membrane; Peripheral membrane protein; Cytoplasmic side. Cytoplasm, cytoskeleton. Cell projection, axon. Cell projection, dendrite. Secreted Note=Mostly found in the axons of neurons, in the cytosol and in association with plasma membrane components (PubMed:10747907). Can be secreted; the secretion is dependent on protein unfolding and facilitated by the cargo receptor TMED10; it results in protein translocation from the cytoplasm into the ERGIC (endoplasmic reticulum- Golgi intermediate compartment) followed by vesicle entry and secretion (PubMed:32272059).

#### Tissue Location

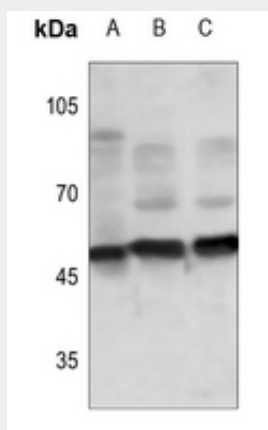
Expressed in neurons. Isoform PNS-tau is expressed in the peripheral nervous system while the others are expressed in the central nervous system

#### Anti-TAU (pS673) Antibody - Protocols

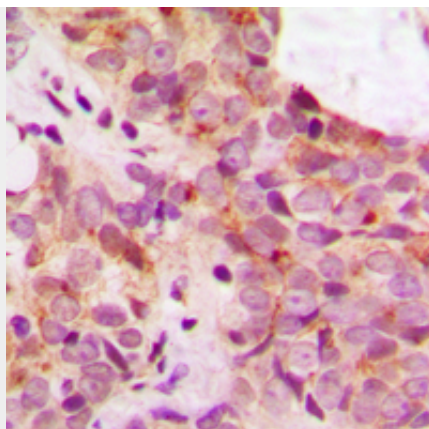
Provided below are standard protocols that you may find useful for product applications.

- [Western Blot](#)
- [Blocking Peptides](#)
- [Dot Blot](#)
- [Immunohistochemistry](#)
- [Immunofluorescence](#)
- [Immunoprecipitation](#)
- [Flow Cytometry](#)
- [Cell Culture](#)

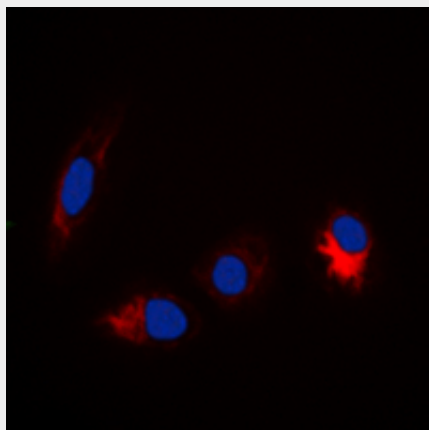
#### Anti-TAU (pS673) Antibody - Images



Western blot analysis of TAU (pS673) expression in mouse kidney (A), mouse muscle (B), rat muscle (C) whole cell lysates.



Immunohistochemical analysis of TAU (pS673) staining in human breast cancer formalin fixed paraffin embedded tissue section. The section was pre-treated using heat mediated antigen retrieval with sodium citrate buffer (pH 6.0). The section was then incubated with the antibody at room temperature and detected using an HRP conjugated compact polymer system. DAB was used as the chromogen. The section was then counterstained with haematoxylin and mounted with DPX.



Immunofluorescent analysis of TAU (pS673) staining in Hela cells. Formalin-fixed cells were permeabilized with 0.1% Triton X-100 in TBS for 5-10 minutes and blocked with 3% BSA-PBS for 30 minutes at room temperature. Cells were probed with the primary antibody in 3% BSA-PBS and incubated overnight at 4 °C in a humidified chamber. Cells were washed with PBST and incubated with a DyLight 594-conjugated secondary antibody (red) in PBS at room temperature in the dark. DAPI was used to stain the cell nuclei (blue).

#### **Anti-TAU (pS673) Antibody - Background**

KLH-conjugated synthetic peptide encompassing a sequence within the C-term region of human TAU (pS673). The exact sequence is proprietary.