

Anti-IDOL Antibody
Rabbit polyclonal antibody to IDOL
Catalog # AP60343**Specification**

Anti-IDOL Antibody - Product Information

Application	WB, IHC
Primary Accession	Q8WY64
Other Accession	Q8BM54
Reactivity	Human, Mouse, Rat, Monkey, Bovine
Host	Rabbit
Clonality	Polyclonal
Calculated MW	49910

Anti-IDOL Antibody - Additional Information**Gene ID** 29116**Other Names**

BZF1; IDOL; E3 ubiquitin-protein ligase MYLIP; Inducible degrader of the LDL-receptor; Idol; Myosin regulatory light chain interacting protein; MIR

Target/Specificity

Recognizes endogenous levels of IDOL protein.

Dilution

WB~~WB (1/500 - 1/1000), IH (1/100 - 1/200)

IHC~~1:100~500

Format

Liquid in 0.42% Potassium phosphate, 0.87% Sodium chloride, pH 7.3, 30% glycerol, and 0.09% (W/V) sodium azide.

Storage

Store at -20 °C. Stable for 12 months from date of receipt

Anti-IDOL Antibody - Protein Information**Name** MYLIP**Synonyms** BZF1, IDOL**Function**

E3 ubiquitin-protein ligase that mediates ubiquitination and subsequent proteasomal degradation of myosin regulatory light chain (MRLC), LDLR, VLDLR and LRP8. Activity depends on E2 enzymes of the UBE2D family. Proteasomal degradation of MRLC leads to inhibit neurite outgrowth in presence of NGF by counteracting the stabilization of MRLC by saposin-like protein (CNPY2/MSAP) and reducing CNPY2-stimulated neurite outgrowth. Acts as a sterol-dependent inhibitor of cellular

cholesterol uptake by mediating ubiquitination and subsequent degradation of LDLR.

Cellular Location

Cytoplasm. Cell membrane; Peripheral membrane protein

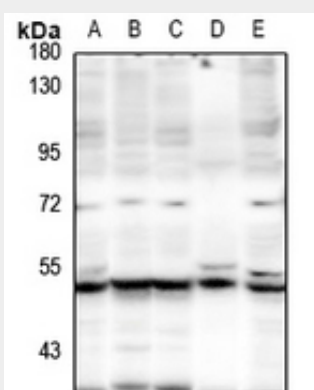
Tissue Location

Ubiquitously expressed.

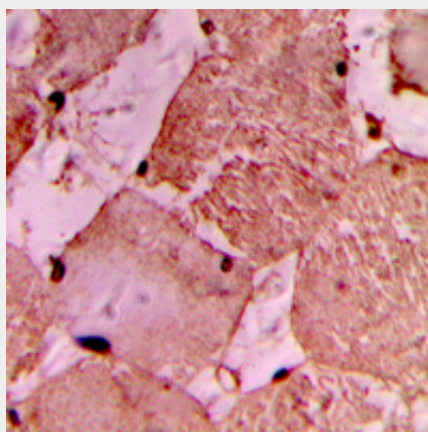
Anti-IDOL Antibody - Protocols

Provided below are standard protocols that you may find useful for product applications.

- [Western Blot](#)
- [Blocking Peptides](#)
- [Dot Blot](#)
- [Immunohistochemistry](#)
- [Immunofluorescence](#)
- [Immunoprecipitation](#)
- [Flow Cytometry](#)
- [Cell Culture](#)

Anti-IDOL Antibody - Images

Western blot analysis of IDOL expression in Hela (A), COS7 (B), MCF7 (C), PC12 (D), CT26 (E) whole cell lysates.



Immunohistochemical analysis of IDOL staining in human heart formalin fixed paraffin embedded tissue section. The section was pre-treated using heat mediated antigen retrieval with sodium citrate buffer (pH 6.0). The section was then incubated with the antibody at room temperature and detected using an HRP conjugated compact polymer system. DAB was used as the chromogen. The section was then counterstained with haematoxylin and mounted with DPX.

Anti-IDOL Antibody - Background

KLH-conjugated synthetic peptide encompassing a sequence within the center region of human IDOL. The exact sequence is proprietary.