

Anti-NDUFA3 Antibody
Rabbit polyclonal antibody to NDUFA3
Catalog # AP60345**Specification**

Anti-NDUFA3 Antibody - Product Information

Application	WB, IHC
Primary Accession	O95167
Other Accession	O9CQ91
Reactivity	Human, Mouse, Rat
Host	Rabbit
Clonality	Polyclonal
Calculated MW	9279

Anti-NDUFA3 Antibody - Additional Information**Gene ID** 4696**Other Names**NADH dehydrogenase [ubiquinone] 1 alpha subcomplex subunit 3; Complex I-B9; CI-B9;
NADH-ubiquinone oxidoreductase B9 subunit**Target/Specificity**

Recognizes endogenous levels of NDUFA3 protein.

Dilution

WB~~WB (1/500 - 1/1000), IH (1/100 - 1/200)

IHC~~1:100~500

Format

Liquid in 0.42% Potassium phosphate, 0.87% Sodium chloride, pH 7.3, 30% glycerol, and 0.09% (W/V) sodium azide.

Storage

Store at -20 °C.Stable for 12 months from date of receipt

Anti-NDUFA3 Antibody - Protein Information**Name** NDUFA3**Function**

Accessory subunit of the mitochondrial membrane respiratory chain NADH dehydrogenase (Complex I), that is believed not to be involved in catalysis. Complex I functions in the transfer of electrons from NADH to the respiratory chain. The immediate electron acceptor for the enzyme is believed to be ubiquinone.

Cellular Location

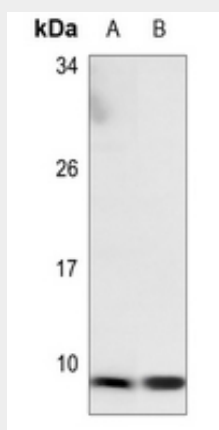
Mitochondrion inner membrane; Single-pass membrane protein

Anti-NDUFA3 Antibody - Protocols

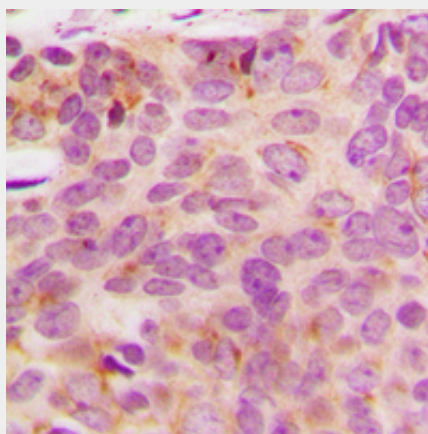
Provided below are standard protocols that you may find useful for product applications.

- [Western Blot](#)
- [Blocking Peptides](#)
- [Dot Blot](#)
- [Immunohistochemistry](#)
- [Immunofluorescence](#)
- [Immunoprecipitation](#)
- [Flow Cytometry](#)
- [Cell Culture](#)

Anti-NDUFA3 Antibody - Images



Western blot analysis of NDUFA3 expression in mouse heart (A), rat heart (B) whole cell lysates.



Immunohistochemical analysis of NDUFA3 staining in human breast cancer formalin fixed paraffin embedded tissue section. The section was pre-treated using heat mediated antigen retrieval with sodium citrate buffer (pH 6.0). The section was then incubated with the antibody at room temperature and detected using an HRP conjugated compact polymer system. DAB was used as the chromogen. The section was then counterstained with haematoxylin and mounted with DPX.

Anti-NDUFA3 Antibody - Background

KLH-conjugated synthetic peptide encompassing a sequence within the center region of human NDUFA3. The exact sequence is proprietary.