

Anti-NDUFB9 Antibody
Rabbit polyclonal antibody to NDUFB9
Catalog # AP60346**Specification**

Anti-NDUFB9 Antibody - Product Information

Application	WB, IHC
Primary Accession	O9Y6M9
Other Accession	O9CQJ8
Reactivity	Human, Mouse, Rat, Monkey, Bovine
Host	Rabbit
Clonality	Polyclonal
Calculated MW	21831

Anti-NDUFB9 Antibody - Additional Information**Gene ID** 4715**Other Names**

LYRM3; UQOR22; NADH dehydrogenase [ubiquinone] 1 beta subcomplex subunit 9; Complex I-B22; CI-B22; LYR motif-containing protein 3; NADH-ubiquinone oxidoreductase B22 subunit

Target/Specificity

KLH-conjugated synthetic peptide encompassing a sequence within the center region of human NDUFB9. The exact sequence is proprietary.

Dilution

WB~~WB (1/500 - 1/1000), IH (1/100 - 1/200)

IHC~~1:100~500

Format

Liquid in 0.42% Potassium phosphate, 0.87% Sodium chloride, pH 7.3, 30% glycerol, and 0.09% (W/V) sodium azide.

Storage

Store at -20 °C. Stable for 12 months from date of receipt

Anti-NDUFB9 Antibody - Protein Information**Name** NDUFB9**Synonyms** LYRM3, UQOR22**Function**

Accessory subunit of the mitochondrial membrane respiratory chain NADH dehydrogenase (Complex I), that is believed to be not involved in catalysis. Complex I functions in the transfer of electrons from NADH to the respiratory chain. The immediate electron acceptor for the enzyme is believed to be ubiquinone.

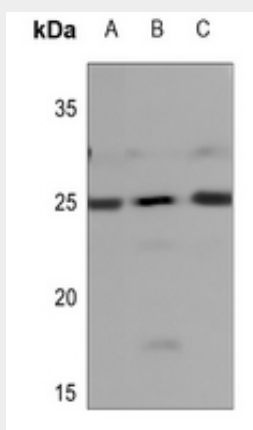
Cellular Location

Mitochondrion inner membrane; Peripheral membrane protein; Matrix side

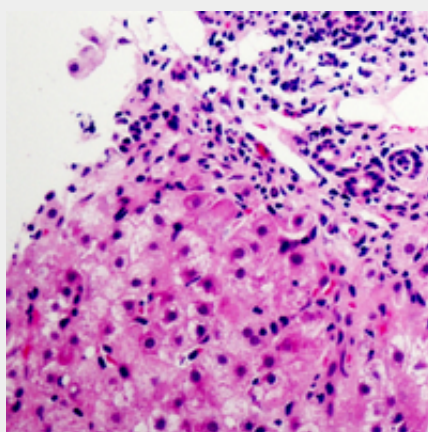
Anti-NDUFB9 Antibody - Protocols

Provided below are standard protocols that you may find useful for product applications.

- [Western Blot](#)
- [Blocking Peptides](#)
- [Dot Blot](#)
- [Immunohistochemistry](#)
- [Immunofluorescence](#)
- [Immunoprecipitation](#)
- [Flow Cytometry](#)
- [Cell Culture](#)

Anti-NDUFB9 Antibody - Images

Western blot analysis of NDUFB9 expression in mouse kidney (A), rat kidney (B), rat heart (C) whole cell lysates.



Immunohistochemical analysis of NDUFB9 staining in human liver cancer formalin fixed paraffin embedded tissue section. The section was pre-treated using heat mediated antigen retrieval with sodium citrate buffer (pH 6.0). The section was then incubated with the antibody at room temperature and detected using an HRP conjugated compact polymer system. DAB was used as the chromogen. The section was then counterstained with haematoxylin and mounted with DPX.

Anti-NDUFB9 Antibody - Background

KLH-conjugated synthetic peptide encompassing a sequence within the center region of human NDUFB9. The exact sequence is proprietary.