

**Anti-CD73 Antibody**  
**Rabbit polyclonal antibody to CD73**  
**Catalog # AP60354****Specification**

---

**Anti-CD73 Antibody - Product Information**

Application	<b>WB</b>
Primary Accession	<a href="#">P21589</a>
Reactivity	<b>Human, Mouse</b>
Host	<b>Rabbit</b>
Clonality	<b>Polyclonal</b>
Calculated MW	<b>63368</b>

**Anti-CD73 Antibody - Additional Information****Gene ID** 4907**Other Names**

NT5; NTE; 5'-nucleotidase; 5'-NT; Ecto-5'-nucleotidase; CD73

**Target/Specificity**

KLH-conjugated synthetic peptide encompassing a sequence within the center region of human CD73. The exact sequence is proprietary.

**Dilution**

WB~~WB (1/500 - 1/1000)

**Format**

Liquid in 0.42% Potassium phosphate, 0.87% Sodium chloride, pH 7.3, 30% glycerol, and 0.09% (W/V) sodium azide.

**Storage**

Store at -20 °C. Stable for 12 months from date of receipt

**Anti-CD73 Antibody - Protein Information****Name** NT5E**Synonyms** NT5, NTE**Function**

Catalyzes the hydrolysis of nucleotide monophosphates, releasing inorganic phosphate and the corresponding nucleoside, with AMP being the preferred substrate (PubMed: &lt;a href="http://www.uniprot.org/citations/21933152" target="\_blank"&gt;21933152&lt;/a&gt;, PubMed: &lt;a href="http://www.uniprot.org/citations/22997138" target="\_blank"&gt;22997138&lt;/a&gt;, PubMed: &lt;a href="http://www.uniprot.org/citations/23142347" target="\_blank"&gt;23142347&lt;/a&gt;, PubMed: &lt;a href="http://www.uniprot.org/citations/24887587" target="\_blank"&gt;24887587&lt;/a&gt;, PubMed: &lt;a href="http://www.uniprot.org/citations/34403084" target="\_blank"&gt;34403084&lt;/a&gt;). Shows a

preference for ribonucleotide monophosphates over their equivalent deoxyribose forms (PubMed:<a href="http://www.uniprot.org/citations/34403084" target="\_blank">34403084</a>). Other substrates include IMP, UMP, GMP, CMP, dAMP, dCMP, dTMP, NAD and NMN (PubMed:<a href="http://www.uniprot.org/citations/21933152" target="\_blank">21933152</a>, PubMed:<a href="http://www.uniprot.org/citations/22997138" target="\_blank">22997138</a>, PubMed:<a href="http://www.uniprot.org/citations/23142347" target="\_blank">23142347</a>, PubMed:<a href="http://www.uniprot.org/citations/24887587" target="\_blank">24887587</a>, PubMed:<a href="http://www.uniprot.org/citations/34403084" target="\_blank">34403084</a>).

#### Cellular Location

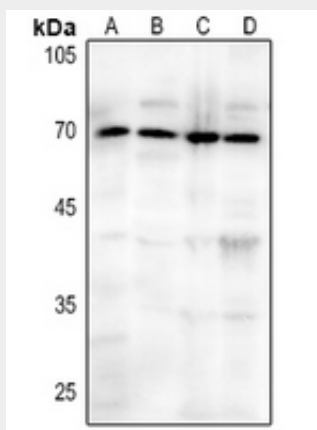
Cell membrane; Lipid-anchor, GPI-anchor

### Anti-CD73 Antibody - Protocols

Provided below are standard protocols that you may find useful for product applications.

- [Western Blot](#)
- [Blocking Peptides](#)
- [Dot Blot](#)
- [Immunohistochemistry](#)
- [Immunofluorescence](#)
- [Immunoprecipitation](#)
- [Flow Cytometry](#)
- [Cell Culture](#)

### Anti-CD73 Antibody - Images



Western blot analysis of CD73 expression in HEK293T (A), mouse muscle (B), mouse spleen (C), mouse lung (D) whole cell lysates.

### Anti-CD73 Antibody - Background

KLH-conjugated synthetic peptide encompassing a sequence within the center region of human CD73. The exact sequence is proprietary.