

**Anti-POLR2E Antibody**  
**Rabbit polyclonal antibody to POLR2E**  
**Catalog # AP60363****Specification**

---

**Anti-POLR2E Antibody - Product Information**

Application	<b>WB, IHC</b>
Primary Accession	<a href="#">P19388</a>
Other Accession	<a href="#">Q80UW8</a>
Reactivity	<b>Human, Mouse, Rat, Monkey, Bovine</b>
Host	<b>Rabbit</b>
Clonality	<b>Polyclonal</b>
Calculated MW	<b>24551</b>

**Anti-POLR2E Antibody - Additional Information****Gene ID** 5434**Other Names**

DNA-directed RNA polymerases I, II, and III subunit RPABC1; RNA polymerases I, II, and III subunit ABC1; DNA-directed RNA polymerase II 23 kDa polypeptide; DNA-directed RNA polymerase II subunit E; RPB5 homolog; XAP4

**Target/Specificity**

Recognizes endogenous levels of POLR2E protein.

**Dilution**

WB~~WB (1/500 - 1/1000), IH (1/100 - 1/200)

IHC~~1:100~500

**Format**

Liquid in 0.42% Potassium phosphate, 0.87% Sodium chloride, pH 7.3, 30% glycerol, and 0.09% (W/V) sodium azide.

**Storage**

Store at -20 °C.Stable for 12 months from date of receipt

**Anti-POLR2E Antibody - Protein Information****Name** POLR2E ([HGNC:9192](#))**Function**

DNA-dependent RNA polymerase catalyzes the transcription of DNA into RNA using the four ribonucleoside triphosphates as substrates. Common component of RNA polymerases I, II and III which synthesize ribosomal RNA precursors, mRNA precursors and many functional non- coding RNAs, and small RNAs, such as 5S rRNA and tRNAs, respectively. Pol II is the central component of the basal RNA polymerase II transcription machinery. Pols are composed of mobile elements that move relative to each other. In Pol II, POLR2E/RPABC1 is part of the lower jaw surrounding the

central large cleft and thought to grab the incoming DNA template.

#### **Cellular Location**

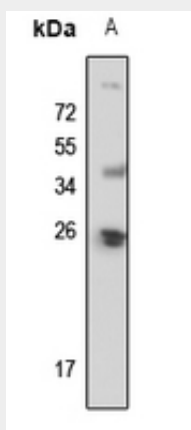
Nucleus. Nucleus, nucleolus

#### **Anti-POLR2E Antibody - Protocols**

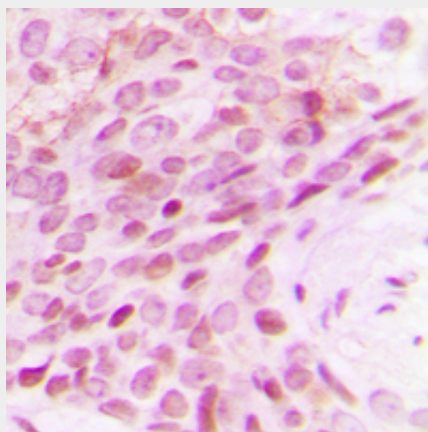
Provided below are standard protocols that you may find useful for product applications.

- [Western Blot](#)
- [Blocking Peptides](#)
- [Dot Blot](#)
- [Immunohistochemistry](#)
- [Immunofluorescence](#)
- [Immunoprecipitation](#)
- [Flow Cytometry](#)
- [Cell Culture](#)

#### **Anti-POLR2E Antibody - Images**



Western blot analysis of POLR2E expression in mouse kidney (A) whole cell lysates.



Immunohistochemical analysis of POLR2E staining in human breast cancer formalin fixed paraffin embedded tissue section. The section was pre-treated using heat mediated antigen retrieval with sodium citrate buffer (pH 6.0). The section was then incubated with the antibody at room temperature and detected using an HRP conjugated compact polymer system. DAB was used as

the chromogen. The section was then counterstained with haematoxylin and mounted with DPX.

#### **Anti-POLR2E Antibody - Background**

KLH-conjugated synthetic peptide encompassing a sequence within the center region of human POLR2E. The exact sequence is proprietary.