

Anti-POM121 Antibody
Rabbit polyclonal antibody to POM121
Catalog # AP60364**Specification**

Anti-POM121 Antibody - Product Information

Application	WB, IHC
Primary Accession	O96HA1 , A6NF01 , A8CG34
Other Accession	Q8K3Z9
Reactivity	Human, Mouse, Rat
Host	Rabbit
Clonality	Polyclonal

Anti-POM121 Antibody - Additional Information**Other Names**

POM121; KIAA0618; NUP121; POM121A; Nuclear envelope pore membrane protein POM 121; Nuclear envelope pore membrane protein POM 121A; Nucleoporin Nup121; Pore membrane protein of 121 kDa; POM121B; Putative nuclear envelope pore membrane protein POM 121B; POM121C; Nuclear envelope pore membrane protein POM 121C; Nuclear pore membrane protein 121-2; POM121-2; Pore membrane protein of 121 kDa C

Target/Specificity

Recognizes endogenous levels of POM121 protein.

Dilution

WB~~WB (1/500 - 1/1000), IH (1/100 - 1/200)

IHC~~1:100~500

Format

Liquid in 0.42% Potassium phosphate, 0.87% Sodium chloride, pH 7.3, 30% glycerol, and 0.09% (W/V) sodium azide.

Storage

Store at -20 °C. Stable for 12 months from date of receipt

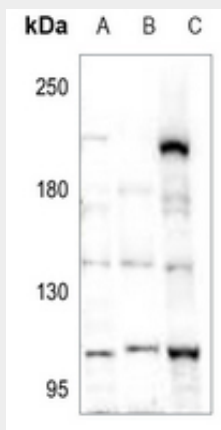
Anti-POM121 Antibody - Protein Information**Anti-POM121 Antibody - Protocols**

Provided below are standard protocols that you may find useful for product applications.

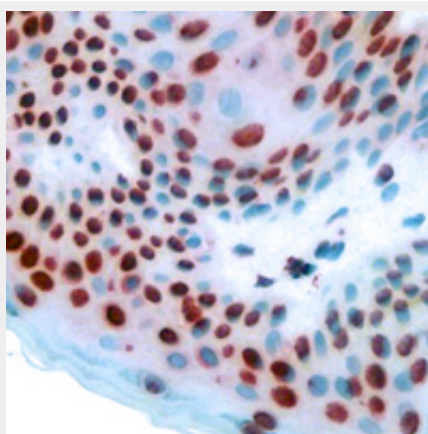
- [Western Blot](#)
- [Blocking Peptides](#)
- [Dot Blot](#)
- [Immunohistochemistry](#)

- [Immunofluorescence](#)
- [Immunoprecipitation](#)
- [Flow Cytometry](#)
- [Cell Culture](#)

Anti-POM121 Antibody - Images



Western blot analysis of POM121 expression in mouse kidney (A), mouse muscle (B), rat muscle (C) whole cell lysates.



Immunohistochemical analysis of POM121 staining in human skin formalin fixed paraffin embedded tissue section. The section was pre-treated using heat mediated antigen retrieval with sodium citrate buffer (pH 6.0). The section was then incubated with the antibody at room temperature and detected using an HRP conjugated compact polymer system. DAB was used as the chromogen. The section was then counterstained with haematoxylin and mounted with DPX.

Anti-POM121 Antibody - Background

KLH-conjugated synthetic peptide encompassing a sequence within the C-term region of human POM121. The exact sequence is proprietary.