

Anti-PPP2R5D Antibody
Rabbit polyclonal antibody to PPP2R5D
Catalog # AP60366**Specification**

Anti-PPP2R5D Antibody - Product Information

Application	WB, IHC
Primary Accession	Q14738
Reactivity	Human, Mouse, Monkey, Bovine
Host	Rabbit
Clonality	Polyclonal
Calculated MW	69992

Anti-PPP2R5D Antibody - Additional Information**Gene ID** 5528**Other Names**

Serine/threonine-protein phosphatase 2A 56 kDa regulatory subunit delta isoform; PP2A B subunit isoform B'-delta; PP2A B subunit isoform B56-delta; PP2A B subunit isoform PR61-delta; PP2A B subunit isoform R5-delta

Target/Specificity

Recognizes endogenous levels of PPP2R5D protein.

Dilution

WB~~WB (1/500 - 1/1000), IH (1/100 - 1/200)

IHC~~1:100~500

Format

Liquid in 0.42% Potassium phosphate, 0.87% Sodium chloride, pH 7.3, 30% glycerol, and 0.09% (W/V) sodium azide.

Storage

Store at -20 °C.Stable for 12 months from date of receipt

Anti-PPP2R5D Antibody - Protein Information**Name** PPP2R5D**Function**

The B regulatory subunit might modulate substrate selectivity and catalytic activity, and might also direct the localization of the catalytic enzyme to a particular subcellular compartment.

Cellular Location

Cytoplasm. Nucleus. Note=Nuclear in interphase, nuclear during mitosis

Tissue Location

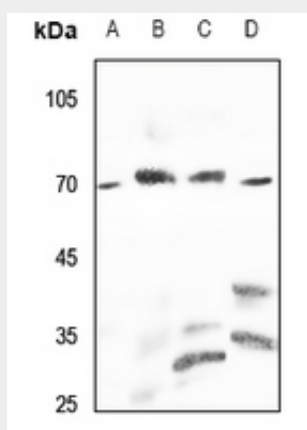
Isoform Delta-2 is widely expressed. Isoform Delta- 1 is highly expressed in brain

Anti-PPP2R5D Antibody - Protocols

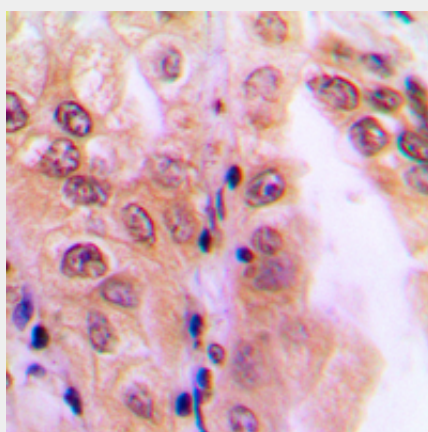
Provided below are standard protocols that you may find useful for product applications.

- [Western Blot](#)
- [Blocking Peptides](#)
- [Dot Blot](#)
- [Immunohistochemistry](#)
- [Immunofluorescence](#)
- [Immunoprecipitation](#)
- [Flow Cytometry](#)
- [Cell Culture](#)

Anti-PPP2R5D Antibody - Images



Western blot analysis of PPP2R5D expression in HEK293 (A), LOVO (B), mouse brain (C), mouse kidney (D) whole cell lysates.



Immunohistochemical analysis of PPP2R5D staining in human lung cancer formalin fixed paraffin embedded tissue section. The section was pre-treated using heat mediated antigen retrieval with sodium citrate buffer (pH 6.0). The section was then incubated with the antibody at room temperature and detected using an HRP conjugated compact polymer system. DAB was used as the chromogen. The section was then counterstained with haematoxylin and mounted with DPX.

Anti-PPP2R5D Antibody - Background

KLH-conjugated synthetic peptide encompassing a sequence within the C-term region of human PPP2R5D. The exact sequence is proprietary.