

**Anti-p23 Antibody**  
**Rabbit polyclonal antibody to p23**  
**Catalog # AP60373****Specification**

---

**Anti-p23 Antibody - Product Information**

Application	WB, IHC
Primary Accession	<a href="#">Q15185</a>
Other Accession	<a href="#">Q9R0Q7</a>
Reactivity	Human, Mouse, Rat, Monkey, Chicken, Bovine
Host	Rabbit
Clonality	Polyclonal
Calculated MW	18697

**Anti-p23 Antibody - Additional Information****Gene ID** 10728**Other Names**

P23; TEBP; Prostaglandin E synthase 3; Cytosolic prostaglandin E2 synthase; cPGES; Hsp90 co-chaperone; Progesterone receptor complex p23; Telomerase-binding protein p23

**Target/Specificity**

KLH-conjugated synthetic peptide encompassing a sequence within the center region of human p23. The exact sequence is proprietary.

**Dilution**

WB~~WB (1/500 - 1/1000), IH (1/100 - 1/200)

IHC~~1:100~500

**Format**

Liquid in 0.42% Potassium phosphate, 0.87% Sodium chloride, pH 7.3, 30% glycerol, and 0.09% (W/V) sodium azide.

**Storage**

Store at -20 °C. Stable for 12 months from date of receipt

**Anti-p23 Antibody - Protein Information****Name** PTGES3**Synonyms** P23, TEBP**Function**

Cytosolic prostaglandin synthase that catalyzes the oxidoreduction of prostaglandin endoperoxide H2 (PGH2) to prostaglandin E2 (PGE2) (PubMed:&lt;a href="http://www.uniprot.org/citations/10922363" target="\_blank"&gt;10922363&lt;/a&gt;). Molecular

chaperone that localizes to genomic response elements in a hormone-dependent manner and disrupts receptor-mediated transcriptional activation, by promoting disassembly of transcriptional regulatory complexes (PubMed:<a href="http://www.uniprot.org/citations/11274138" target="\_blank">11274138</a>, PubMed:<a href="http://www.uniprot.org/citations/12077419" target="\_blank">12077419</a>). Facilitates HIF alpha proteins hydroxylation via interaction with EGLN1/PHD2, leading to recruit EGLN1/PHD2 to the HSP90 pathway (PubMed:<a href="http://www.uniprot.org/citations/24711448" target="\_blank">24711448</a>).

#### Cellular Location

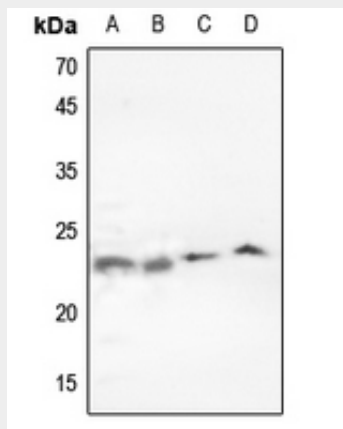
Cytoplasm {ECO:0000250|UniProtKB:Q3ZBF7}.

### Anti-p23 Antibody - Protocols

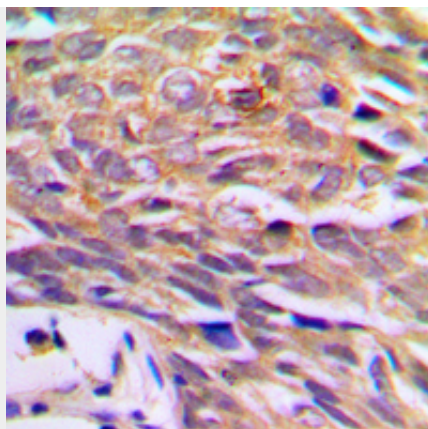
Provided below are standard protocols that you may find useful for product applications.

- [Western Blot](#)
- [Blocking Peptides](#)
- [Dot Blot](#)
- [Immunohistochemistry](#)
- [Immunofluorescence](#)
- [Immunoprecipitation](#)
- [Flow Cytometry](#)
- [Cell Culture](#)

### Anti-p23 Antibody - Images



Western blot analysis of p23 expression in mouse lung (A), mouse testis (B), rat lung (C), rat testis (D) whole cell lysates.



Immunohistochemical analysis of p23 staining in human prostate cancer formalin fixed paraffin embedded tissue section. The section was pre-treated using heat mediated antigen retrieval with sodium citrate buffer (pH 6.0). The section was then incubated with the antibody at room temperature and detected using an HRP conjugated compact polymer system. DAB was used as the chromogen. The section was then counterstained with haematoxylin and mounted with DPX.

#### **Anti-p23 Antibody - Background**

KLH-conjugated synthetic peptide encompassing a sequence within the center region of human p23. The exact sequence is proprietary.