

Anti-PTP1B (pS50) Antibody
Rabbit polyclonal antibody to PTP1B (pS50)
Catalog # AP60376

Specification

Anti-PTP1B (pS50) Antibody - Product Information

Application	WB, IHC
Primary Accession	P18031
Other Accession	P35821
Reactivity	Human, Mouse, Rat, Zebrafish, Monkey, Pig, Chicken, Dog
Host	Rabbit
Clonality	Polyclonal
Calculated MW	49967

Anti-PTP1B (pS50) Antibody - Additional Information

Gene ID 5770

Other Names

PTP1B; Tyrosine-protein phosphatase non-receptor type 1; Protein-tyrosine phosphatase 1B; PTP-1B

Target/Specificity

KLH-conjugated synthetic peptide encompassing a sequence within the N-term region of human PTP1B (pS50). The exact sequence is proprietary.

Dilution

WB~~WB (1/500 - 1/1000), IH (1/100 - 1/200)
IHC~~1:100~500

Format

Liquid in 0.42% Potassium phosphate, 0.87% Sodium chloride, pH 7.3, 30% glycerol, and 0.09% (W/V) sodium azide.

Storage

Store at -20 °C. Stable for 12 months from date of receipt

Anti-PTP1B (pS50) Antibody - Protein Information

Name PTPN1

Synonyms PTP1B

Function

Tyrosine-protein phosphatase which acts as a regulator of endoplasmic reticulum unfolded protein response. Mediates dephosphorylation of EIF2AK3/PERK; inactivating the protein kinase activity of EIF2AK3/PERK. May play an important role in CKII- and p60c- src-induced signal transduction

cascades. May regulate the EFNA5-EPHA3 signaling pathway which modulates cell reorganization and cell-cell repulsion. May also regulate the hepatocyte growth factor receptor signaling pathway through dephosphorylation of MET.

Cellular Location

Endoplasmic reticulum membrane; Peripheral membrane protein; Cytoplasmic side Note=Interacts with EPHA3 at the cell membrane

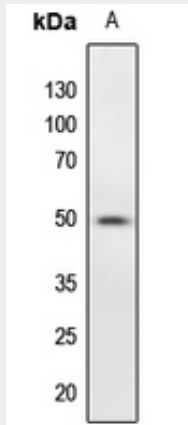
Tissue Location

Expressed in keratinocytes (at protein level).

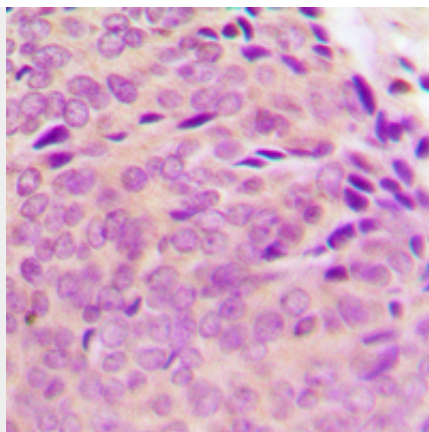
Anti-PTP1B (pS50) Antibody - Protocols

Provided below are standard protocols that you may find useful for product applications.

- [Western Blot](#)
- [Blocking Peptides](#)
- [Dot Blot](#)
- [Immunohistochemistry](#)
- [Immunofluorescence](#)
- [Immunoprecipitation](#)
- [Flow Cytometry](#)
- [Cell Culture](#)

Anti-PTP1B (pS50) Antibody - Images

Western blot analysis of PTP1B (pS50) expression in zebrafish (A) whole cell lysates.



Immunohistochemical analysis of PTP1B (pS50) staining in human breast cancer formalin fixed paraffin embedded tissue section. The section was pre-treated using heat mediated antigen retrieval with sodium citrate buffer (pH 6.0). The section was then incubated with the antibody at room temperature and detected using an HRP conjugated compact polymer system. DAB was used as the chromogen. The section was then counterstained with haematoxylin and mounted with DPX.

Anti-PTP1B (pS50) Antibody - Background

KLH-conjugated synthetic peptide encompassing a sequence within the N-term region of human PTP1B (pS50). The exact sequence is proprietary.