

Anti-PTTG1IP Antibody
Rabbit polyclonal antibody to PTTG1IP
Catalog # AP60377**Specification**

Anti-PTTG1IP Antibody - Product Information

| | |
|-------------------|------------------------|
| Application | WB, IF/IC, IHC |
| Primary Accession | P53801 |
| Other Accession | Q8R143 |
| Reactivity | Human, Mouse, Rat |
| Host | Rabbit |
| Clonality | Polyclonal |
| Calculated MW | 20324 |

Anti-PTTG1IP Antibody - Additional Information**Gene ID** 754**Other Names**

C21orf1; C21orf3; Pituitary tumor-transforming gene 1 protein-interacting protein; Pituitary tumor-transforming gene protein-binding factor; PBF; PTTG-binding factor

Target/Specificity

Recognizes endogenous levels of PTTG1IP protein.

Dilution

WB~~WB (1/500 - 1/1000), IH (1/100 - 1/200), IF/IC (1/100 - 1/500)

IF/IC~~N/A

IHC~~1:100~500

Format

Liquid in 0.42% Potassium phosphate, 0.87% Sodium chloride, pH 7.3, 30% glycerol, and 0.09% (W/V) sodium azide.

Storage

Store at -20 °C.Stable for 12 months from date of receipt

Anti-PTTG1IP Antibody - Protein Information**Name** PTTG1IP**Synonyms** C21orf1, C21orf3**Function**

May facilitate PTTG1 nuclear translocation.

Cellular Location

Membrane; Single-pass type I membrane protein. Cytoplasm. Nucleus Note=According to

PubMed:10781616, it is found in the cytoplasm and the nucleus

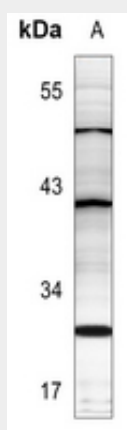
Tissue Location

Ubiquitous.

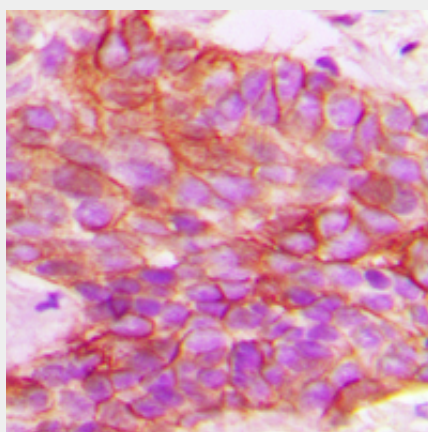
Anti-PTTG1IP Antibody - Protocols

Provided below are standard protocols that you may find useful for product applications.

- [Western Blot](#)
- [Blocking Peptides](#)
- [Dot Blot](#)
- [Immunohistochemistry](#)
- [Immunofluorescence](#)
- [Immunoprecipitation](#)
- [Flow Cytometry](#)
- [Cell Culture](#)

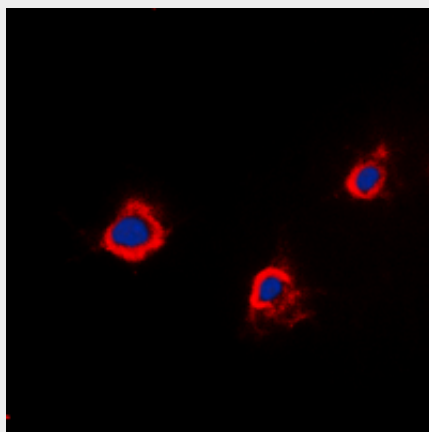
Anti-PTTG1IP Antibody - Images

Western blot analysis of PTTG1IP expression in mouse kidney (A) whole cell lysates.



Immunohistochemical analysis of PTTG1IP staining in human breast cancer formalin fixed paraffin embedded tissue section. The section was pre-treated using heat mediated antigen retrieval with sodium citrate buffer (pH 6.0). The section was then incubated with the antibody at room temperature and detected using an HRP conjugated compact polymer system. DAB was used as

the chromogen. The section was then counterstained with haematoxylin and mounted with DPX.



Immunofluorescent analysis of PTTG1IP staining in A549 cells. Formalin-fixed cells were permeabilized with 0.1% Triton X-100 in TBS for 5-10 minutes and blocked with 3% BSA-PBS for 30 minutes at room temperature. Cells were probed with the primary antibody in 3% BSA-PBS and incubated overnight at 4 °C in a humidified chamber. Cells were washed with PBST and incubated with a DyLight 594-conjugated secondary antibody (red) in PBS at room temperature in the dark. DAPI was used to stain the cell nuclei (blue).

Anti-PTTG1IP Antibody - Background

KLH-conjugated synthetic peptide encompassing a sequence within the center region of human PTTG1IP. The exact sequence is proprietary.