

**Anti-G15 Antibody**  
**Rabbit polyclonal antibody to G15**  
**Catalog # AP60379****Specification**

---

**Anti-G15 Antibody - Product Information**

Application	WB, IH
Primary Accession	<a href="#">P52756</a>
Other Accession	<a href="#">Q91YE7</a>
Reactivity	Human, Mouse, Rat, Bovine
Host	Rabbit
Clonality	Polyclonal
Calculated MW	92154

**Anti-G15 Antibody - Additional Information****Gene ID** 10181**Other Names**

RNA-binding protein 5; Protein G15; Putative tumor suppressor LUCA15; RNA-binding motif protein 5; Renal carcinoma antigen NY-REN-9

**Target/Specificity**

Recognizes endogenous levels of G15 protein.

**Dilution**

WB~~WB (1/500 - 1/1000), IH (1/100 - 1/200)

IH~~WB (1/500 - 1/1000), IH (1/100 - 1/200)

**Format**

Liquid in 0.42% Potassium phosphate, 0.87% Sodium chloride, pH 7.3, 30% glycerol, and 0.09% (W/V) sodium azide.

**Storage**

Store at -20 °C. Stable for 12 months from date of receipt

**Anti-G15 Antibody - Protein Information****Name** RBM5**Function**

Component of the spliceosome A complex. Regulates alternative splicing of a number of mRNAs. May modulate splice site pairing after recruitment of the U1 and U2 snRNPs to the 5' and 3' splice sites of the intron. May both positively and negatively regulate apoptosis by regulating the alternative splicing of several genes involved in this process, including FAS and CASP2/caspase-2. In the case of FAS, promotes exclusion of exon 6 thereby producing a soluble form of FAS that inhibits apoptosis. In the case of CASP2/caspase-2, promotes exclusion of exon 9 thereby producing a catalytically active form of CASP2/Caspase-2 that induces apoptosis.

**Cellular Location**

Nucleus.

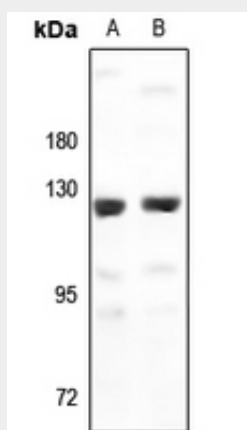
**Tissue Location**

Isoform 5 is widely expressed in normal tissues and is expressed at increased levels in T-leukemic cell lines

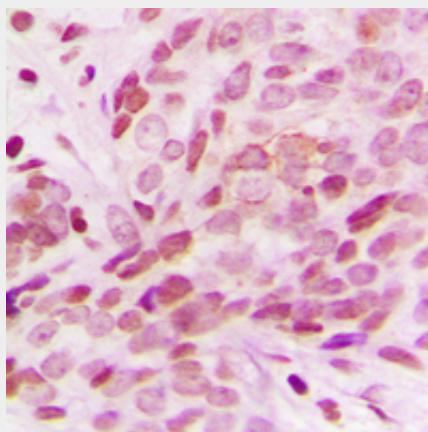
**Anti-G15 Antibody - Protocols**

Provided below are standard protocols that you may find useful for product applications.

- [Western Blot](#)
- [Blocking Peptides](#)
- [Dot Blot](#)
- [Immunohistochemistry](#)
- [Immunofluorescence](#)
- [Immunoprecipitation](#)
- [Flow Cytometry](#)
- [Cell Culture](#)

**Anti-G15 Antibody - Images**

Western blot analysis of G15 expression in K562 (A), Jurkat (B) whole cell lysates.



Immunohistochemical analysis of G15 staining in human breast cancer formalin fixed paraffin embedded tissue section. The section was pre-treated using heat mediated antigen retrieval with

sodium citrate buffer (pH 6.0). The section was then incubated with the antibody at room temperature and detected using an HRP conjugated compact polymer system. DAB was used as the chromogen. The section was then counterstained with haematoxylin and mounted with DPX.

**Anti-G15 Antibody - Background**

KLH-conjugated synthetic peptide encompassing a sequence within the center region of human G15. The exact sequence is proprietary.