

**Anti-RPL22 Antibody**  
**Rabbit polyclonal antibody to RPL22**  
**Catalog # AP60387****Specification**

---

**Anti-RPL22 Antibody - Product Information**

Application	WB, IHC
Primary Accession	<a href="#">P35268</a>
Other Accession	<a href="#">P67984</a>
Reactivity	Human, Mouse, Rat, Monkey, Pig, Chicken
Host	Rabbit
Clonality	Polyclonal
Calculated MW	14787

**Anti-RPL22 Antibody - Additional Information****Gene ID** 6146**Other Names**

60S ribosomal protein L22; EBER-associated protein; EAP; Epstein-Barr virus small RNA-associated protein; Heparin-binding protein HBp15

**Target/Specificity**

KLH-conjugated synthetic peptide encompassing a sequence within the center region of human RPL22. The exact sequence is proprietary.

**Dilution**

WB~~WB (1/500 - 1/1000), IH (1/100 - 1/200)

IHC~~1:100~500

**Format**

Liquid in 0.42% Potassium phosphate, 0.87% Sodium chloride, pH 7.3, 30% glycerol, and 0.09% (W/V) sodium azide.

**Storage**

Store at -20 °C. Stable for 12 months from date of receipt

**Anti-RPL22 Antibody - Protein Information****Name** RPL22**Function**

Component of the large ribosomal subunit (PubMed: <a href="http://www.uniprot.org/citations/23636399" target="\_blank">23636399</a>, PubMed: <a href="http://www.uniprot.org/citations/32669547" target="\_blank">32669547</a>). The ribosome is a large ribonucleoprotein complex responsible for the synthesis of proteins in the cell (PubMed: <a href="http://www.uniprot.org/citations/23636399" target="\_blank">23636399</a>, PubMed: <a href="http://www.uniprot.org/citations/32669547" target="\_blank">32669547</a>).

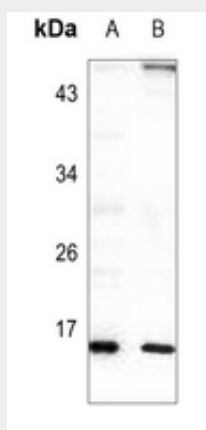
**Cellular Location**

Cytoplasm.

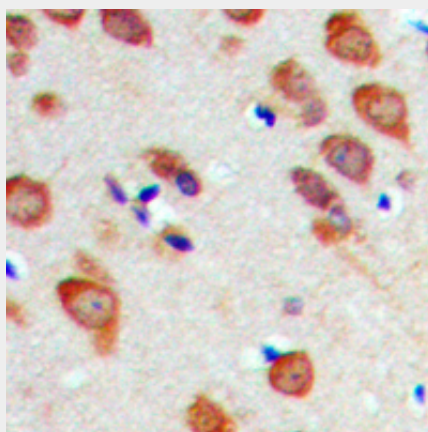
**Anti-RPL22 Antibody - Protocols**

Provided below are standard protocols that you may find useful for product applications.

- [Western Blot](#)
- [Blocking Peptides](#)
- [Dot Blot](#)
- [Immunohistochemistry](#)
- [Immunofluorescence](#)
- [Immunoprecipitation](#)
- [Flow Cytometry](#)
- [Cell Culture](#)

**Anti-RPL22 Antibody - Images**

Western blot analysis of RPL22 expression in SP20 (A), C6 (B) whole cell lysates.



Immunohistochemical analysis of RPL22 staining in human brain formalin fixed paraffin embedded tissue section. The section was pre-treated using heat mediated antigen retrieval with sodium citrate buffer (pH 6.0). The section was then incubated with the antibody at room temperature and detected using an HRP conjugated compact polymer system. DAB was used as the chromogen. The section was then counterstained with haematoxylin and mounted with DPX.

**Anti-RPL22 Antibody - Background**

KLH-conjugated synthetic peptide encompassing a sequence within the center region of human RPL22. The exact sequence is proprietary.