

Anti-SGK1/2 (pT256/253) Antibody
Rabbit polyclonal antibody to SGK1/2 (pT256/253)
Catalog # AP60393**Specification**

Anti-SGK1/2 (pT256/253) Antibody - Product Information

| | |
|-------------------|---|
| Application | WB, IH, IF, E |
| Primary Accession | O00141 , Q9HBY8 |
| Other Accession | Q9WVC6 , Q9QZS5 |
| Reactivity | Human, Mouse, Rat, Rabbit, Zebrafish, Chicken, Bovine |
| Host | Rabbit |
| Clonality | Polyclonal |

Anti-SGK1/2 (pT256/253) Antibody - Additional Information**Other Names**

SGK1;SGK;Serine/threonine-protein kinase Sgk1; Serum/glucocorticoid-regulated kinase 1; SGK2; Serine/threonine-protein kinase Sgk2; Serum/glucocorticoid-regulated kinase 2

Target/Specificity

Recognizes endogenous levels of SGK1/2 (pT256/253) protein.

Dilution

WB~~WB (1/500 - 1/1000), IH (1/100 - 1/200), IF/IC (1/100 - 1/500)
IH~~WB (1/500 - 1/1000), IH (1/100 - 1/200), IF/IC (1/100 - 1/500)
IF~~WB (1/500 - 1/1000), IH (1/100 - 1/200), IF/IC (1/100 - 1/500)
E~~WB (1/500 - 1/1000), IH (1/100 - 1/200), IF/IC (1/100 - 1/500)

Format

Liquid in 0.42% Potassium phosphate, 0.87% Sodium chloride, pH 7.3, 30% glycerol, and 0.09% (W/V) sodium azide.

Storage

Store at -20 °C.Stable for 12 months from date of receipt

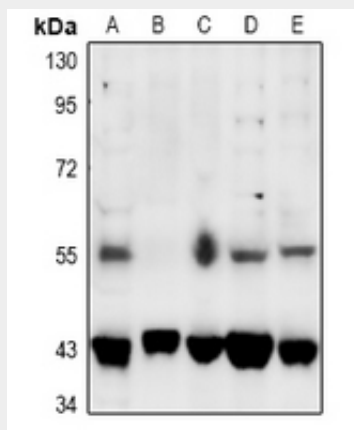
Anti-SGK1/2 (pT256/253) Antibody - Protein Information**Anti-SGK1/2 (pT256/253) Antibody - Protocols**

Provided below are standard protocols that you may find useful for product applications.

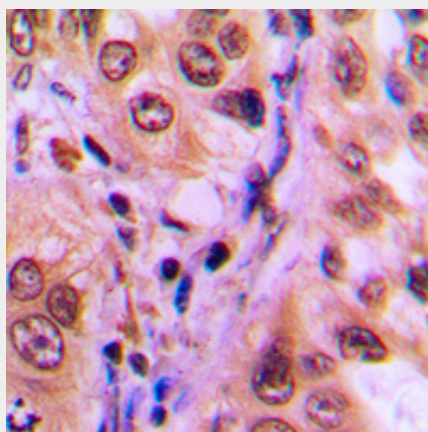
- [Western Blot](#)
- [Blocking Peptides](#)
- [Dot Blot](#)
- [Immunohistochemistry](#)

- [Immunofluorescence](#)
- [Immunoprecipitation](#)
- [Flow Cytometry](#)
- [Cell Culture](#)

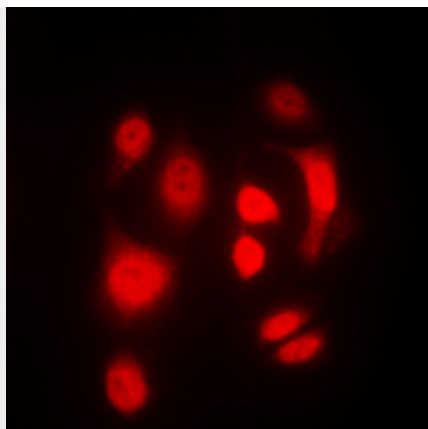
Anti-SGK1/2 (pT256/253) Antibody - Images



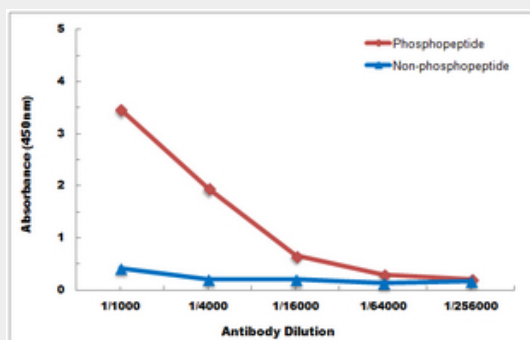
Western blot analysis of SGK1/2 (pT256/253) expression in Hela (A), HCC827 (B), HEK293T (C), rat brain (D), mouse brain (E) whole cell lysates.



Immunohistochemical analysis of SGK1/2 (pT256/253) staining in human lung cancer formalin fixed paraffin embedded tissue section. The section was pre-treated using heat mediated antigen retrieval with sodium citrate buffer (pH 6.0). The section was then incubated with the antibody at room temperature and detected using an HRP conjugated compact polymer system. DAB was used as the chromogen. The section was then counterstained with haematoxylin and mounted with DPX.



Immunofluorescent analysis of SGK1/2 (pT256/253) staining in HeLa cells. Formalin-fixed cells were permeabilized with 0.1% Triton X-100 in TBS for 5-10 minutes and blocked with 3% BSA-PBS for 30 minutes at room temperature. Cells were probed with the primary antibody in 3% BSA-PBS and incubated overnight at 4 °C in a humidified chamber. Cells were washed with PBST and incubated with a DyLight 594-conjugated secondary antibody (red) in PBS at room temperature in the dark.



Direct ELISA antibody dose-response curve using Anti-SGK1/2 (pT256/253) Antibody. Antigen (phosphopeptide and non-phosphopeptide) concentration is 5 ug/ml. Goat Anti-Rabbit IgG (H&L) - HRP was used as the secondary antibody, and signal was developed by TMB substrate.

Anti-SGK1/2 (pT256/253) Antibody - Background

KLH-conjugated synthetic peptide encompassing a sequence within the center region of human SGK1/2 (pT256/253). The exact sequence is proprietary.