

**Anti-Tachykinin Receptor 1 Antibody**  
**Rabbit polyclonal antibody to Tachykinin Receptor 1**  
**Catalog # AP60400****Specification**

---

**Anti-Tachykinin Receptor 1 Antibody - Product Information**

Application	WB, IF/IC
Primary Accession	<a href="#">P25103</a>
Other Accession	<a href="#">P30548</a>
Reactivity	Human, Mouse, Rat, Chicken, Dog
Host	Rabbit
Clonality	Polyclonal
Calculated MW	46251

**Anti-Tachykinin Receptor 1 Antibody - Additional Information****Gene ID** 6869**Other Names**

NK1R; TAC1R; Substance-P receptor; SPR; NK-1 receptor; NK-1R; Tachykinin receptor 1

**Target/Specificity**

Recognizes endogenous levels of Tachykinin Receptor 1 protein.

**Dilution**

WB~~WB (1/500 - 1/1000), IF/IC (1/100 - 1/500)

IF/IC~~N/A

**Format**

Liquid in 0.42% Potassium phosphate, 0.87% Sodium chloride, pH 7.3, 30% glycerol, and 0.09% (W/V) sodium azide.

**Storage**

Store at -20 °C. Stable for 12 months from date of receipt

**Anti-Tachykinin Receptor 1 Antibody - Protein Information****Name** TACR1**Synonyms** NK1R, TAC1R**Function**

This is a receptor for the tachykinin neuropeptide substance P. It is probably associated with G proteins that activate a phosphatidylinositol-calcium second messenger system. The rank order of affinity of this receptor to tachykinins is: substance P &gt; substance K &gt; neuromedin-K.

**Cellular Location**

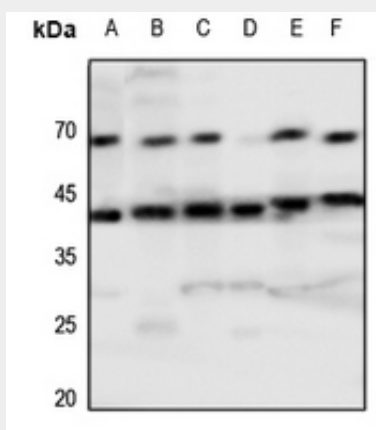
Cell membrane; Multi-pass membrane protein.

## Anti-Tachykinin Receptor 1 Antibody - Protocols

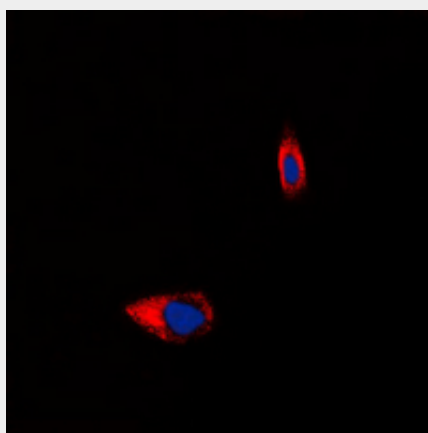
Provided below are standard protocols that you may find useful for product applications.

- [Western Blot](#)
- [Blocking Peptides](#)
- [Dot Blot](#)
- [Immunohistochemistry](#)
- [Immunofluorescence](#)
- [Immunoprecipitation](#)
- [Flow Cytometry](#)
- [Cell Culture](#)

## Anti-Tachykinin Receptor 1 Antibody - Images



Western blot analysis of Tachykinin Receptor 1 expression in HEK293T (A), A2780 (B), mouse spleen (C), mouse kidney (D), rat spleen (E), rat kidney (F) whole cell lysates.



Immunofluorescent analysis of Tachykinin Receptor 1 staining in HeLa cells. Formalin-fixed cells were permeabilized with 0.1% Triton X-100 in TBS for 5-10 minutes and blocked with 3% BSA-PBS for 30 minutes at room temperature. Cells were probed with the primary antibody in 3% BSA-PBS and incubated overnight at 4 °C in a humidified chamber. Cells were washed with PBST and incubated with a DyLight 594-conjugated secondary antibody (red) in PBS at room temperature in the dark. DAPI was used to stain the cell nuclei (blue).

## Anti-Tachykinin Receptor 1 Antibody - Background

KLH-conjugated synthetic peptide encompassing a sequence within the center region of human Tachykinin Receptor 1. The exact sequence is proprietary.