

Anti-TACSTD2 Antibody
Rabbit polyclonal antibody to TACSTD2
Catalog # AP60401**Specification**

Anti-TACSTD2 Antibody - Product Information

| | |
|-------------------|------------------------|
| Application | WB, IF/IC, IHC |
| Primary Accession | P09758 |
| Other Accession | Q8BGV3 |
| Reactivity | Human, Mouse, Rat, Pig |
| Host | Rabbit |
| Clonality | Polyclonal |
| Calculated MW | 35709 |

Anti-TACSTD2 Antibody - Additional Information**Gene ID** 4070**Other Names**

GA733-1; M1S1; TROP2; Tumor-associated calcium signal transducer 2; Cell surface glycoprotein Trop-2; Membrane component chromosome 1 surface marker 1; Pancreatic carcinoma marker protein GA733-1

Target/Specificity

Recognizes endogenous levels of TACSTD2 protein.

Dilution

WB~~WB (1/500 - 1/1000), IH (1/100 - 1/200), IF/IC (1/100 - 1/500)

IF/IC~~N/A

IHC~~1:100~500

Format

Liquid in 0.42% Potassium phosphate, 0.87% Sodium chloride, pH 7.3, 30% glycerol, and 0.09% (W/V) sodium azide.

Storage

Store at -20 °C. Stable for 12 months from date of receipt

Anti-TACSTD2 Antibody - Protein Information**Name** TACSTD2**Synonyms** GA733-1, M1S1, TROP2**Function**

May function as a growth factor receptor.

Cellular Location

Membrane; Single-pass type I membrane protein.

Tissue Location

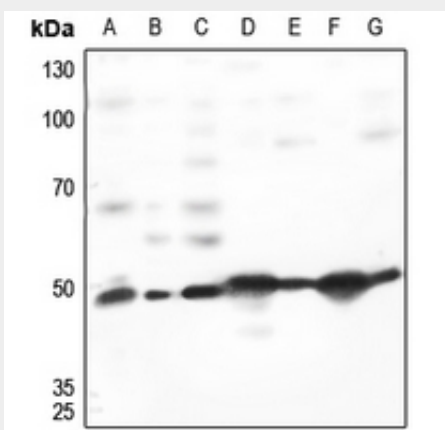
Placenta, pancreatic carcinoma cell lines.

Anti-TACSTD2 Antibody - Protocols

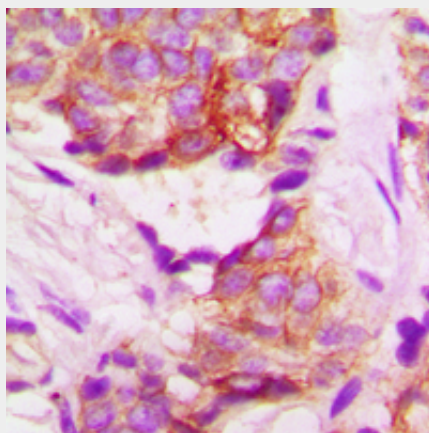
Provided below are standard protocols that you may find useful for product applications.

- [Western Blot](#)
- [Blocking Peptides](#)
- [Dot Blot](#)
- [Immunohistochemistry](#)
- [Immunofluorescence](#)
- [Immunoprecipitation](#)
- [Flow Cytometry](#)
- [Cell Culture](#)

Anti-TACSTD2 Antibody - Images

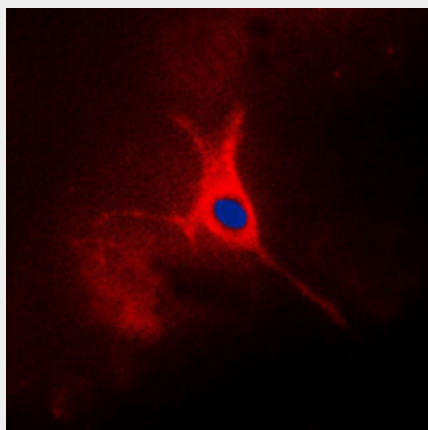


Western blot analysis of TACSTD2 expression in HEK293T (A), Hela (B), H1688 (C), mouse kidney (D), mouse lung (E), rat kidney (F), rat lung (G) whole cell lysates.



Immunohistochemical analysis of TACSTD2 staining in human lung cancer formalin fixed paraffin embedded tissue section. The section was pre-treated using heat mediated antigen retrieval with sodium citrate buffer (pH 6.0). The section was then incubated with the antibody at room

temperature and detected using an HRP conjugated compact polymer system. DAB was used as the chromogen. The section was then counterstained with haematoxylin and mounted with DPX.



Immunofluorescent analysis of TACSTD2 staining in A549 cells. Formalin-fixed cells were permeabilized with 0.1% Triton X-100 in TBS for 5-10 minutes and blocked with 3% BSA-PBS for 30 minutes at room temperature. Cells were probed with the primary antibody in 3% BSA-PBS and incubated overnight at 4 °C in a humidified chamber. Cells were washed with PBST and incubated with a DyLight 594-conjugated secondary antibody (red) in PBS at room temperature in the dark. DAPI was used to stain the cell nuclei (blue).

Anti-TACSTD2 Antibody - Background

KLH-conjugated synthetic peptide encompassing a sequence within the center region of human TACSTD2. The exact sequence is proprietary.