

**Anti-Thrombospondin 2 Antibody**  
**Rabbit polyclonal antibody to Thrombospondin 2**  
**Catalog # AP60403****Specification**

---

**Anti-Thrombospondin 2 Antibody - Product Information**

Application	WB, IHC
Primary Accession	<a href="#">P35442</a>
Other Accession	<a href="#">Q03350</a>
Reactivity	Human, Mouse, Rat, Chicken, Bovine, Dog
Host	Rabbit
Clonality	Polyclonal
Calculated MW	129991

**Anti-Thrombospondin 2 Antibody - Additional Information****Gene ID** 7058**Other Names**

TSP2; Thrombospondin-2

**Target/Specificity**

KLH-conjugated synthetic peptide encompassing a sequence within the C-term region of human Thrombospondin 2. The exact sequence is proprietary.

**Dilution**

WB~~WB (1/500 - 1/1000), IH (1/50 - 1/200)

IHC~~1:100~500

**Format**

Liquid in 0.42% Potassium phosphate, 0.87% Sodium chloride, pH 7.3, 30% glycerol, and 0.09% (W/V) sodium azide.

**Storage**

Store at -20 °C. Stable for 12 months from date of receipt

**Anti-Thrombospondin 2 Antibody - Protein Information****Name** THBS2**Synonyms** TSP2**Function**

Adhesive glycoprotein that mediates cell-to-cell and cell-to- matrix interactions. Ligand for CD36 mediating angiogenic properties.

**Tissue Location**

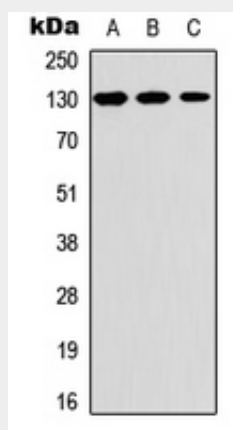
High expression in intervertebral disk tissue.

## Anti-Thrombospondin 2 Antibody - Protocols

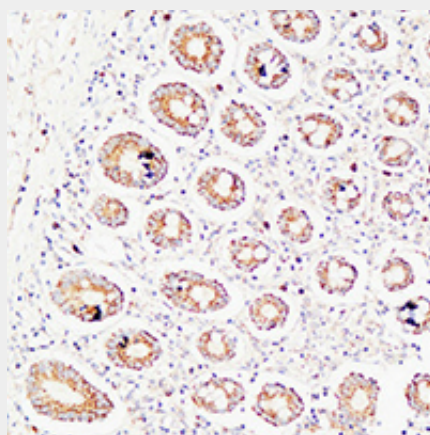
Provided below are standard protocols that you may find useful for product applications.

- [Western Blot](#)
- [Blocking Peptides](#)
- [Dot Blot](#)
- [Immunohistochemistry](#)
- [Immunofluorescence](#)
- [Immunoprecipitation](#)
- [Flow Cytometry](#)
- [Cell Culture](#)

## Anti-Thrombospondin 2 Antibody - Images



Western blot analysis of Thrombospondin 2 expression in A549 (A), Raw264.7 (B), PC12 (C) whole cell lysates.



Immunohistochemical analysis of Thrombospondin 2 staining in human colon formalin fixed paraffin embedded tissue section. The section was pre-treated using heat mediated antigen retrieval with sodium citrate buffer (pH 6.0). The section was then incubated with the antibody at room temperature and detected using an HRP conjugated compact polymer system. DAB was used as the chromogen. The section was then counterstained with haematoxylin and mounted with DPX.

## Anti-Thrombospondin 2 Antibody - Background

KLH-conjugated synthetic peptide encompassing a sequence within the C-term region of human Thrombospondin 2. The exact sequence is proprietary.