

Anti-TMBIM1 Antibody
Rabbit polyclonal antibody to TMBIM1
Catalog # AP60404**Specification**

Anti-TMBIM1 Antibody - Product Information

Application	WB, IHC
Primary Accession	O969X1
Other Accession	O8BJZ3
Reactivity	Human, Mouse, Rat
Host	Rabbit
Clonality	Polyclonal
Calculated MW	34607

Anti-TMBIM1 Antibody - Additional Information**Gene ID** 64114**Other Names**

LFG3; RECS1; Protein lifeguard 3; Protein RECS1 homolog; Transmembrane BAX inhibitor motif-containing protein 1

Target/Specificity

KLH-conjugated synthetic peptide encompassing a sequence within the C-term region of human TMBIM1. The exact sequence is proprietary.

Dilution

WB~~WB (1/500 - 1/1000), IH (1/100 - 1/200)

IHC~~1:100~500

Format

Liquid in 0.42% Potassium phosphate, 0.87% Sodium chloride, pH 7.3, 30% glycerol, and 0.09% (W/V) sodium azide.

Storage

Store at -20 °C. Stable for 12 months from date of receipt

Anti-TMBIM1 Antibody - Protein Information**Name** TMBIM1**Synonyms** LFG3, RECS1**Function**

Negatively regulates aortic matrix metalloproteinase-9 (MMP9) production and may play a protective role in vascular remodeling.

Cellular Location

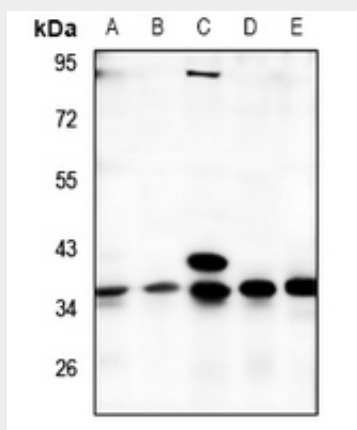
Membrane; Multi-pass membrane protein. Lysosome membrane Endosome membrane

Anti-TMBIM1 Antibody - Protocols

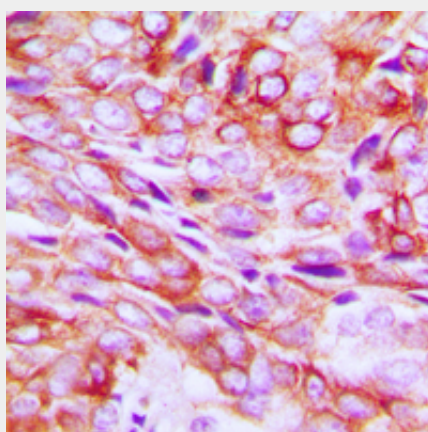
Provided below are standard protocols that you may find useful for product applications.

- [Western Blot](#)
- [Blocking Peptides](#)
- [Dot Blot](#)
- [Immunohistochemistry](#)
- [Immunofluorescence](#)
- [Immunoprecipitation](#)
- [Flow Cytometry](#)
- [Cell Culture](#)

Anti-TMBIM1 Antibody - Images



Western blot analysis of TMBIM1 expression in A549 (A), MCF7 (B), COS7 (C), CT26 (D), PC12 (E) whole cell lysates.



Immunohistochemical analysis of TMBIM1 staining in human breast cancer formalin fixed paraffin embedded tissue section. The section was pre-treated using heat mediated antigen retrieval with sodium citrate buffer (pH 6.0). The section was then incubated with the antibody at room temperature and detected using an HRP conjugated compact polymer system. DAB was used as the chromogen. The section was then counterstained with haematoxylin and mounted with DPX.

Anti-TMBIM1 Antibody - Background

KLH-conjugated synthetic peptide encompassing a sequence within the C-term region of human TMBIM1. The exact sequence is proprietary.