

Anti-ECHOS1 Antibody
Rabbit polyclonal antibody to ECHOS1
Catalog # AP60405**Specification**

Anti-ECHOS1 Antibody - Product Information

Application	WB, IF/IC, IHC
Primary Accession	P57727
Other Accession	Q8K1T0
Reactivity	Human, Mouse, Rat
Host	Rabbit
Clonality	Polyclonal
Calculated MW	49405

Anti-ECHOS1 Antibody - Additional Information**Gene ID** 64699**Other Names**

ECHOS1; TADG12; Transmembrane protease serine 3; Serine protease TADG-12; Tumor-associated differentially-expressed gene 12 protein

Target/Specificity

Recognizes endogenous levels of ECHOS1 protein.

Dilution

WB~~WB (1/500 - 1/1000), IH (1/100 - 1/200), IF/IC (1/100 - 1/500)

IF/IC~~N/A

IHC~~1:100~500

Format

Liquid in 0.42% Potassium phosphate, 0.87% Sodium chloride, pH 7.3, 30% glycerol, and 0.09% (W/V) sodium azide.

Storage

Store at -20 °C.Stable for 12 months from date of receipt

Anti-ECHOS1 Antibody - Protein Information**Name** TMPRSS3**Synonyms** ECHOS1, TADG12**Function**

Probable serine protease that plays a role in hearing. Acts as a permissive factor for cochlear hair cell survival and activation at the onset of hearing and is required for saccular hair cell survival (By similarity). Activates ENaC (in vitro).

Cellular Location

Endoplasmic reticulum membrane; Single-pass type II membrane protein

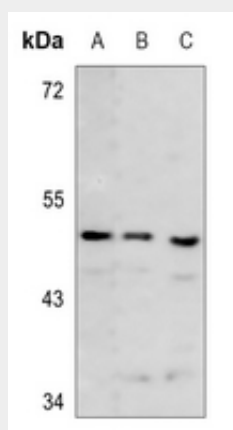
Tissue Location

Expressed in many tissues including fetal cochlea. Isoform T is found at increased levels in some carcinomas

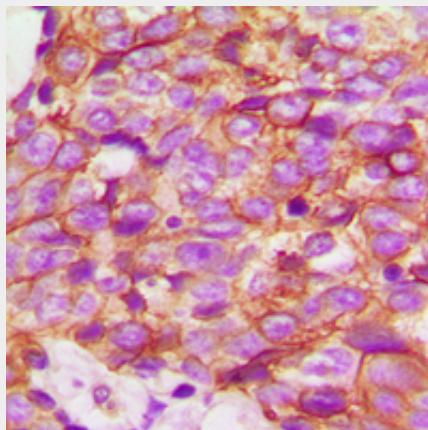
Anti-ECHOS1 Antibody - Protocols

Provided below are standard protocols that you may find useful for product applications.

- [Western Blot](#)
- [Blocking Peptides](#)
- [Dot Blot](#)
- [Immunohistochemistry](#)
- [Immunofluorescence](#)
- [Immunoprecipitation](#)
- [Flow Cytometry](#)
- [Cell Culture](#)

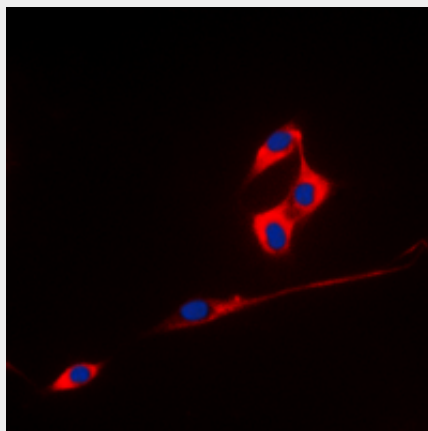
Anti-ECHOS1 Antibody - Images

Western blot analysis of ECHOS1 expression in HEK293T (A), mouse kidney (B), rat lung (C) whole cell lysates.



Immunohistochemical analysis of ECHOS1 staining in human breast cancer formalin fixed paraffin

embedded tissue section. The section was pre-treated using heat mediated antigen retrieval with sodium citrate buffer (pH 6.0). The section was then incubated with the antibody at room temperature and detected using an HRP conjugated compact polymer system. DAB was used as the chromogen. The section was then counterstained with haematoxylin and mounted with DPX.



Immunofluorescent analysis of ECHOS1 staining in A431 cells. Formalin-fixed cells were permeabilized with 0.1% Triton X-100 in TBS for 5-10 minutes and blocked with 3% BSA-PBS for 30 minutes at room temperature. Cells were probed with the primary antibody in 3% BSA-PBS and incubated overnight at 4 °C in a humidified chamber. Cells were washed with PBST and incubated with a DyLight 594-conjugated secondary antibody (red) in PBS at room temperature in the dark. DAPI was used to stain the cell nuclei (blue).

Anti-ECHOS1 Antibody - Background

KLH-conjugated synthetic peptide encompassing a sequence within the C-term region of human ECHOS1. The exact sequence is proprietary.