

**Anti-TRIM38 Antibody**  
**Rabbit polyclonal antibody to TRIM38**  
**Catalog # AP60412****Specification**

---

**Anti-TRIM38 Antibody - Product Information**

Application	WB
Primary Accession	<a href="#">O00635</a>
Reactivity	Human, Mouse, Rat, Monkey
Host	Rabbit
Clonality	Polyclonal
Calculated MW	53416

**Anti-TRIM38 Antibody - Additional Information****Gene ID** 10475**Other Names**

RNF15; RORET; Tripartite motif-containing protein 38; RING finger protein 15; Zinc finger protein RoRet

**Target/Specificity**

KLH-conjugated synthetic peptide encompassing a sequence within the center region of human TRIM38. The exact sequence is proprietary.

**Dilution**

WB~~WB (1/500 - 1/1000)

**Format**

Liquid in 0.42% Potassium phosphate, 0.87% Sodium chloride, pH 7.3, 30% glycerol, and 0.09% (W/V) sodium azide.

**Storage**

Store at -20 °C. Stable for 12 months from date of receipt

**Anti-TRIM38 Antibody - Protein Information****Name** TRIM38 {ECO:0000303|PubMed:23056470, ECO:0000312|HGNC:HGNC:10059}**Function**

E3 ubiquitin-protein and E3 SUMO-protein ligase that acts as a regulator of innate immunity (PubMed:<a href="http://www.uniprot.org/citations/23056470" target="\_blank">23056470</a>). Acts as a negative regulator of type I interferon IFN-beta production by catalyzing 'Lys- 48'-linked polyubiquitination of AZI2/NAP1, leading to its degradation (By similarity). Mediates 'Lys-48'-linked polyubiquitination and proteasomal degradation of the critical TLR adapter TICAM1, inhibiting TLR3-mediated type I interferon signaling (PubMed:<a href="http://www.uniprot.org/citations/23056470" target="\_blank">23056470</a>). Acts as positive regulator of the cGAS-STING pathway by acting as a E3 SUMO- protein ligase: mediates

sumoylation of CGAS and STING, preventing their degradation and thereby activating the innate immune response to DNA virus (By similarity). Also acts as a negative regulator of NF- kappa-B signaling independently of its E3 protein ligase activity by promoting lysosome-dependent degradation of TAB2 and TAB3 adapters (PubMed:<a href="http://www.uniprot.org/citations/24434549" target="\_blank">24434549</a>).

**Cellular Location**

Cytoplasm {ECO:0000250|UniProtKB:Q5SZ99}.

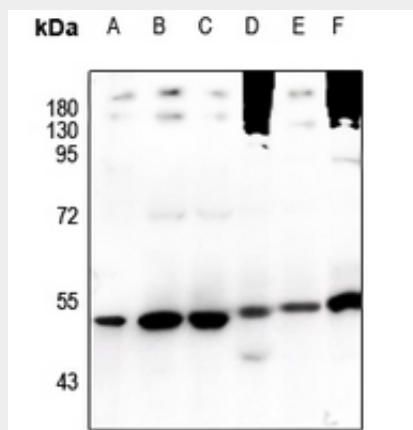
**Tissue Location**

Ubiquitous..

**Anti-TRIM38 Antibody - Protocols**

Provided below are standard protocols that you may find useful for product applications.

- [Western Blot](#)
- [Blocking Peptides](#)
- [Dot Blot](#)
- [Immunohistochemistry](#)
- [Immunofluorescence](#)
- [Immunoprecipitation](#)
- [Flow Cytometry](#)
- [Cell Culture](#)

**Anti-TRIM38 Antibody - Images**

Western blot analysis of TRIM38 expression in SGC7901 (A), HEK293T (B), A549 (C), mouse embryo (D), rat stomach (E), H9C2 (F) whole cell lysates.

**Anti-TRIM38 Antibody - Background**

KLH-conjugated synthetic peptide encompassing a sequence within the center region of human TRIM38. The exact sequence is proprietary.