

Anti-TTF1 Antibody
Rabbit polyclonal antibody to TTF1
Catalog # AP60414**Specification**

Anti-TTF1 Antibody - Product Information

Application	WB, IHC
Primary Accession	Q15361
Other Accession	Q62187
Reactivity	Human, Mouse, Rat
Host	Rabbit
Clonality	Polyclonal
Calculated MW	103051

Anti-TTF1 Antibody - Additional Information**Gene ID** 7270**Other Names**

Transcription termination factor 1; TTF-1; RNA polymerase I termination factor; Transcription termination factor I; TTF-I

Target/Specificity

KLH-conjugated synthetic peptide encompassing a sequence within the N-term region of human TTF1. The exact sequence is proprietary.

Dilution

WB~~WB (1/500 - 1/1000), IH (1/100 - 1/200)

IHC~~1:100~500

Format

Liquid in 0.42% Potassium phosphate, 0.87% Sodium chloride, pH 7.3, 30% glycerol, and 0.09% (W/V) sodium azide.

Storage

Store at -20 °C. Stable for 12 months from date of receipt

Anti-TTF1 Antibody - Protein Information**Name** TTF1**Function**

Multifunctional nucleolar protein that terminates ribosomal gene transcription, mediates replication fork arrest and regulates RNA polymerase I transcription on chromatin. Plays a dual role in rDNA regulation, being involved in both activation and silencing of rDNA transcription. Interaction with BAZ2A/TIP5 recovers DNA-binding activity.

Cellular Location

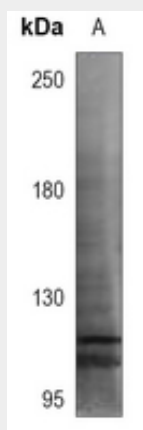
Nucleus {ECO:0000250|UniProtKB:Q62187}. Nucleus, nucleolus {ECO:0000250|UniProtKB:Q62187}. Nucleus, nucleoplasm {ECO:0000250|UniProtKB:Q62187}. Note=May be localized to the nucleolus in an NPM1/B23-dependent manner. May be displaced from the nucleolus into the nucleoplasm in an CDKN2A/ARF-dependent manner. May shuttle back and forth from nucleoplasm to nucleolus {ECO:0000250|UniProtKB:Q62187}

Anti-TTF1 Antibody - Protocols

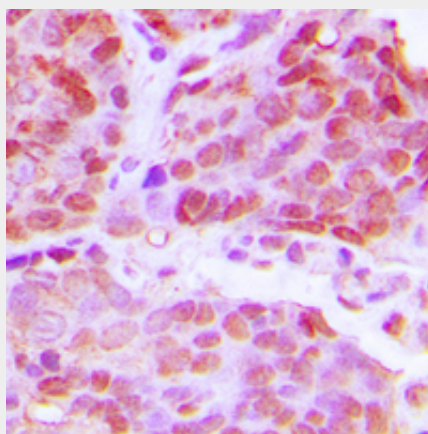
Provided below are standard protocols that you may find useful for product applications.

- [Western Blot](#)
- [Blocking Peptides](#)
- [Dot Blot](#)
- [Immunohistochemistry](#)
- [Immunofluorescence](#)
- [Immunoprecipitation](#)
- [Flow Cytometry](#)
- [Cell Culture](#)

Anti-TTF1 Antibody - Images



Western blot analysis of TTF1 expression in HEK293T (A) whole cell lysates.



Immunohistochemical analysis of TTF1 staining in human breast cancer formalin fixed paraffin embedded tissue section. The section was pre-treated using heat mediated antigen retrieval with sodium citrate buffer (pH 6.0). The section was then incubated with the antibody at room

temperature and detected using an HRP conjugated compact polymer system. DAB was used as the chromogen. The section was then counterstained with haematoxylin and mounted with DPX.

Anti-TTF1 Antibody - Background

KLH-conjugated synthetic peptide encompassing a sequence within the N-term region of human TTF1. The exact sequence is proprietary.