

Anti-WASF3 Antibody
Rabbit polyclonal antibody to WASF3
Catalog # AP60418**Specification**

Anti-WASF3 Antibody - Product Information

Application	WB, IH
Primary Accession	Q9UPY6
Other Accession	Q8VHI6
Reactivity	Human, Mouse, Rat, Monkey
Host	Rabbit
Clonality	Polyclonal
Calculated MW	55293

Anti-WASF3 Antibody - Additional Information**Gene ID** 10810**Other Names**

KIAA0900; SCAR3; WAVE3; Wiskott-Aldrich syndrome protein family member 3; WASP family protein member 3; Protein WAVE-3; Verprolin homology domain-containing protein 3

Target/Specificity

Recognizes endogenous levels of WASF3 protein.

Dilution

WB~~WB (1/500 - 1/1000), IH (1/100 - 1/200)

IH~~WB (1/500 - 1/1000), IH (1/100 - 1/200)

Format

Liquid in 0.42% Potassium phosphate, 0.87% Sodium chloride, pH 7.3, 30% glycerol, and 0.09% (W/V) sodium azide.

Storage

Store at -20 °C. Stable for 12 months from date of receipt

Anti-WASF3 Antibody - Protein Information**Name** WASF3**Synonyms** KIAA0900, SCAR3, WAVE3**Function**

Downstream effector molecules involved in the transmission of signals from tyrosine kinase receptors and small GTPases to the actin cytoskeleton. Plays a role in the regulation of cell morphology and cytoskeletal organization. Required in the control of cell shape.

Cellular Location

Cytoplasm, cytoskeleton.

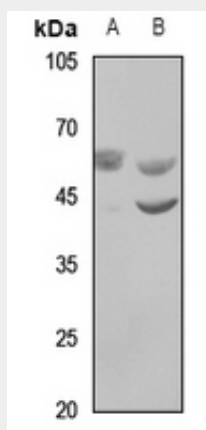
Tissue Location

Expressed in ovary and brain.

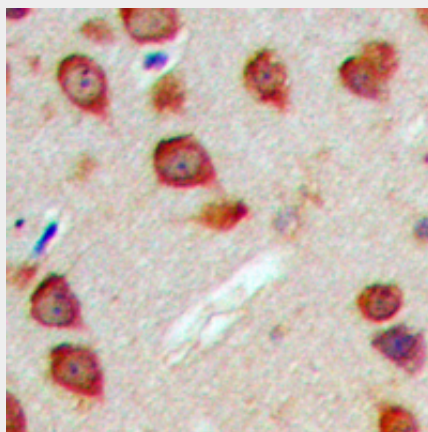
Anti-WASF3 Antibody - Protocols

Provided below are standard protocols that you may find useful for product applications.

- [Western Blot](#)
- [Blocking Peptides](#)
- [Dot Blot](#)
- [Immunohistochemistry](#)
- [Immunofluorescence](#)
- [Immunoprecipitation](#)
- [Flow Cytometry](#)
- [Cell Culture](#)

Anti-WASF3 Antibody - Images

Western blot analysis of WASF3 expression in mouse kidney (A), rat kidney (B) whole cell lysates.



Immunohistochemical analysis of WASF3 staining in human brain formalin fixed paraffin embedded tissue section. The section was pre-treated using heat mediated antigen retrieval with sodium citrate buffer (pH 6.0). The section was then incubated with the antibody at room temperature and detected using an HRP conjugated compact polymer system. DAB was used as

the chromogen. The section was then counterstained with haematoxylin and mounted with DPX.

Anti-WASF3 Antibody - Background

KLH-conjugated synthetic peptide encompassing a sequence within the center region of human WASF3. The exact sequence is proprietary.