

**Anti-PS1D Antibody**  
**Rabbit polyclonal antibody to PS1D**  
**Catalog # AP60419****Specification**

---

**Anti-PS1D Antibody - Product Information**

Application	WB, IHC
Primary Accession	<a href="#">Q9NP64</a>
Other Accession	<a href="#">Q9ESX4</a>
Reactivity	Human, Mouse, Rat, Monkey
Host	Rabbit
Clonality	Polyclonal
Calculated MW	27570

**Anti-PS1D Antibody - Additional Information****Gene ID** 51538**Other Names**

PS1D; Nucleolar protein of 40 kDa; pNO40; Pnn-interacting nucleolar protein; Putative S1 RNA-binding domain protein; PS1D protein; Zinc finger CCHC domain-containing protein 17

**Target/Specificity**

Recognizes endogenous levels of PS1D protein.

**Dilution**

WB~~WB (1/500 - 1/1000), IH (1/100 - 1/200)

IHC~~1:100~500

**Format**

Liquid in 0.42% Potassium phosphate, 0.87% Sodium chloride, pH 7.3, 30% glycerol, and 0.09% (W/V) sodium azide.

**Storage**

Store at -20 °C.Stable for 12 months from date of receipt

**Anti-PS1D Antibody - Protein Information****Name** ZCCHC17**Synonyms** PS1D**Cellular Location**

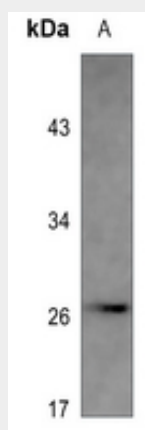
Nucleus, nucleolus.

**Anti-PS1D Antibody - Protocols**

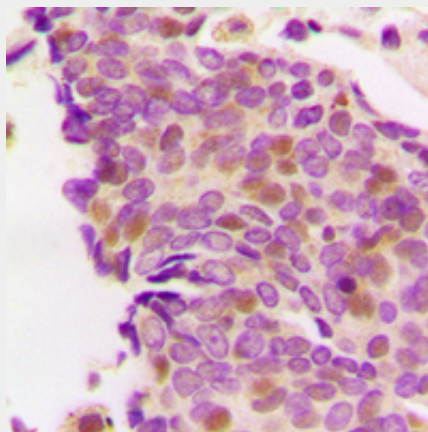
Provided below are standard protocols that you may find useful for product applications.

- [Western Blot](#)
- [Blocking Peptides](#)
- [Dot Blot](#)
- [Immunohistochemistry](#)
- [Immunofluorescence](#)
- [Immunoprecipitation](#)
- [Flow Cytometry](#)
- [Cell Culture](#)

#### Anti-PS1D Antibody - Images



Western blot analysis of PS1D expression in mouse spleen (A) whole cell lysates.



Immunohistochemical analysis of PS1D staining in human breast cancer formalin fixed paraffin embedded tissue section. The section was pre-treated using heat mediated antigen retrieval with sodium citrate buffer (pH 6.0). The section was then incubated with the antibody at room temperature and detected using an HRP conjugated compact polymer system. DAB was used as the chromogen. The section was then counterstained with haematoxylin and mounted with DPX.

#### Anti-PS1D Antibody - Background

KLH-conjugated synthetic peptide encompassing a sequence within the center region of human PS1D. The exact sequence is proprietary.