

**Anti-ZNF148 Antibody**  
**Rabbit polyclonal antibody to ZNF148**  
**Catalog # AP60420****Specification**

---

**Anti-ZNF148 Antibody - Product Information**

Application	WB, IF/IC, IHC
Primary Accession	<a href="#">O9UQR1</a>
Reactivity	Human, Bovine
Host	Rabbit
Clonality	Polyclonal
Calculated MW	88976

**Anti-ZNF148 Antibody - Additional Information****Gene ID** 7707**Other Names**

ZBP89; Zinc finger protein 148; Transcription factor ZBP-89; Zinc finger DNA-binding protein 89

**Target/Specificity**

Recognizes endogenous levels of ZNF148 protein.

**Dilution**

WB~~WB (1/500 - 1/1000), IH (1/100 - 1/200), IF/IC (1/100 - 1/500)

IF/IC~~N/A

IHC~~1:100~500

**Format**

Liquid in 0.42% Potassium phosphate, 0.87% Sodium chloride, pH 7.3, 30% glycerol, and 0.09% (W/V) sodium azide.

**Storage**

Store at -20 °C. Stable for 12 months from date of receipt

**Anti-ZNF148 Antibody - Protein Information****Name** ZNF148**Synonyms** ZBP89**Function**

Involved in transcriptional regulation. Represses the transcription of a number of genes including gastrin, stromelysin and enolase. Binds to the G-rich box in the enhancer region of these genes.

**Cellular Location**

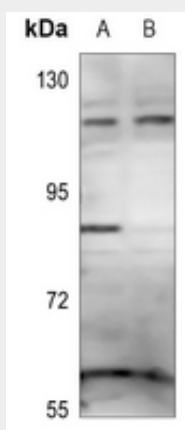
Nucleus.

## Anti-ZNF148 Antibody - Protocols

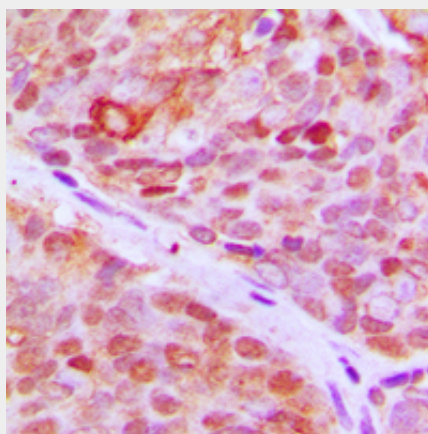
Provided below are standard protocols that you may find useful for product applications.

- [Western Blot](#)
- [Blocking Peptides](#)
- [Dot Blot](#)
- [Immunohistochemistry](#)
- [Immunofluorescence](#)
- [Immunoprecipitation](#)
- [Flow Cytometry](#)
- [Cell Culture](#)

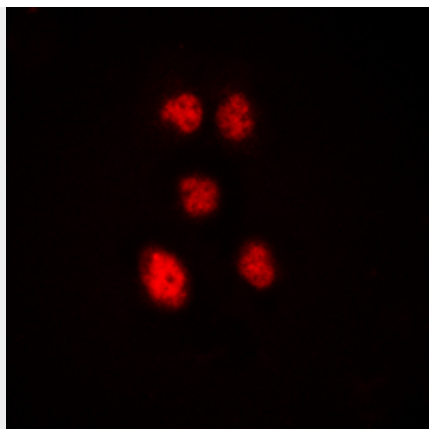
## Anti-ZNF148 Antibody - Images



Western blot analysis of ZNF148 expression in HEK293T (A), H446 (B) whole cell lysates.



Immunohistochemical analysis of ZNF148 staining in human breast cancer formalin fixed paraffin embedded tissue section. The section was pre-treated using heat mediated antigen retrieval with sodium citrate buffer (pH 6.0). The section was then incubated with the antibody at room temperature and detected using an HRP conjugated compact polymer system. DAB was used as the chromogen. The section was then counterstained with haematoxylin and mounted with DPX.



Immunofluorescent analysis of ZNF148 staining in HeLa cells. Formalin-fixed cells were permeabilized with 0.1% Triton X-100 in TBS for 5-10 minutes and blocked with 3% BSA-PBS for 30 minutes at room temperature. Cells were probed with the primary antibody in 3% BSA-PBS and incubated overnight at 4 °C in a humidified chamber. Cells were washed with PBST and incubated with a DyLight 594-conjugated secondary antibody (red) in PBS at room temperature in the dark.

**Anti-ZNF148 Antibody - Background**

KLH-conjugated synthetic peptide encompassing a sequence within the N-term region of human ZNF148. The exact sequence is proprietary.