

Anti-ARMCX1 Antibody
Rabbit polyclonal antibody to ARMCX1
Catalog # AP60426**Specification**

Anti-ARMCX1 Antibody - Product Information

Application	WB
Primary Accession	O9P291
Other Accession	O9CX83
Reactivity	Human, Mouse, Rat, Monkey
Host	Rabbit
Clonality	Polyclonal
Calculated MW	49180

Anti-ARMCX1 Antibody - Additional Information**Gene ID** 51309**Other Names**

ALEX1; Armadillo repeat-containing X-linked protein 1; ARM protein lost in epithelial cancers on chromosome X 1; Protein ALEX1

Target/Specificity

Recognizes endogenous levels of ARMCX1 protein.

Dilution

WB~~WB (1/500 - 1/1000)

Format

Liquid in 0.42% Potassium phosphate, 0.87% Sodium chloride, pH 7.3, 30% glycerol, and 0.09% (W/V) sodium azide.

Storage

Store at -20 °C. Stable for 12 months from date of receipt

Anti-ARMCX1 Antibody - Protein Information**Name** ARMCX1**Synonyms** ALEX1**Function**

Regulates mitochondrial transport during axon regeneration. Increases the proportion of motile mitochondria by recruiting stationary mitochondria into the motile pool. Enhances mitochondria movement and neurite growth in both adult axons and embryonic neurons. Promotes neuronal survival and axon regeneration after nerve injury. May link mitochondria to the Trak1-kinesin motor complex via its interaction with MIRO1.

Cellular Location

Mitochondrion {ECO:0000250|UniProtKB:Q9CX83}. Mitochondrion outer membrane {ECO:0000250|UniProtKB:Q9CX83}; Single-pass membrane protein

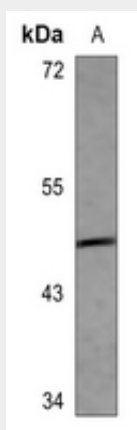
Tissue Location

Expressed at high levels ovary, heart, testis, prostate, brain, spleen and colon. Expressed at very low levels in liver and thymus. Not expressed in peripheral blood leukocytes. Not or reduced expressed in lung, prostate, colon, pancreas and ovarian carcinomas.

Anti-ARMCX1 Antibody - Protocols

Provided below are standard protocols that you may find useful for product applications.

- [Western Blot](#)
- [Blocking Peptides](#)
- [Dot Blot](#)
- [Immunohistochemistry](#)
- [Immunofluorescence](#)
- [Immunoprecipitation](#)
- [Flow Cytometry](#)
- [Cell Culture](#)

Anti-ARMCX1 Antibody - Images

Western blot analysis of ARMCX1 expression in rat kidney (A) whole cell lysates.

Anti-ARMCX1 Antibody - Background

KLH-conjugated synthetic peptide encompassing a sequence within the N-term region of human ARMCX1. The exact sequence is proprietary.