

**Anti-Ataxin 1 (pS775) Antibody**  
**Rabbit polyclonal antibody to Ataxin 1 (pS775)**  
**Catalog # AP60430**

**Specification**

---

**Anti-Ataxin 1 (pS775) Antibody - Product Information**

Application	WB, IF/IC, IHC
Primary Accession	<a href="#">P54253</a>
Other Accession	<a href="#">P54254</a>
Reactivity	Human, Mouse, Rat
Host	Rabbit
Clonality	Polyclonal
Calculated MW	86923

**Anti-Ataxin 1 (pS775) Antibody - Additional Information**

**Gene ID** 6310

**Other Names**

ATX1; SCA1; Ataxin-1; Spinocerebellar ataxia type 1 protein

**Target/Specificity**

Recognizes endogenous levels of Ataxin 1 (pS775) protein.

**Dilution**

WB~~WB (1/500 - 1/1000), IH (1/100 - 1/200), IF/IC (1/100 - 1/500)

IF/IC~~N/A

IHC~~1:100~500

**Format**

Liquid in 0.42% Potassium phosphate, 0.87% Sodium chloride, pH 7.3, 30% glycerol, and 0.09% (W/V) sodium azide.

**Storage**

Store at -20 °C. Stable for 12 months from date of receipt

**Anti-Ataxin 1 (pS775) Antibody - Protein Information**

**Name** ATXN1

**Synonyms** ATX1, SCA1

**Function**

Chromatin-binding factor that repress Notch signaling in the absence of Notch intracellular domain by acting as a CBF1 corepressor. Binds to the HEY promoter and might assist, along with NCOR2, RBPJ- mediated repression. Binds RNA in vitro. May be involved in RNA metabolism (PubMed:<a href="http://www.uniprot.org/citations/21475249" target="\_blank">21475249</a>). In concert with CIC and ATXN1L, involved in brain development (By similarity).

**Cellular Location**

Cytoplasm. Nucleus Note=Colocalizes with USP7 in the nucleus

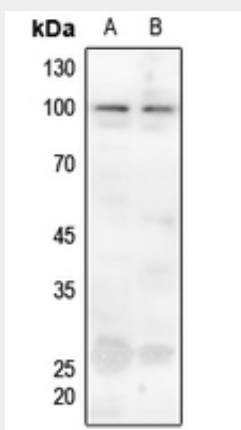
**Tissue Location**

Widely expressed throughout the body.

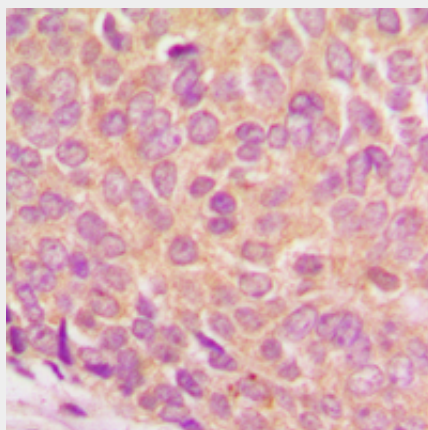
**Anti-Ataxin 1 (pS775) Antibody - Protocols**

Provided below are standard protocols that you may find useful for product applications.

- [Western Blot](#)
- [Blocking Peptides](#)
- [Dot Blot](#)
- [Immunohistochemistry](#)
- [Immunofluorescence](#)
- [Immunoprecipitation](#)
- [Flow Cytometry](#)
- [Cell Culture](#)

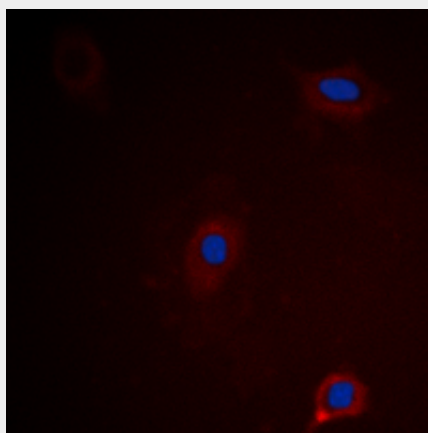
**Anti-Ataxin 1 (pS775) Antibody - Images**

Western blot analysis of Ataxin 1 (pS775) expression in HGC27 (A), mouse lung (B) whole cell lysates.



Immunohistochemical analysis of Ataxin 1 (pS775) staining in human breast cancer formalin fixed paraffin embedded tissue section. The section was pre-treated using heat mediated antigen

retrieval with sodium citrate buffer (pH 6.0). The section was then incubated with the antibody at room temperature and detected using an HRP conjugated compact polymer system. DAB was used as the chromogen. The section was then counterstained with haematoxylin and mounted with DPX.



Immunofluorescent analysis of Ataxin 1 (pS775) staining in HEK293 cells. Formalin-fixed cells were permeabilized with 0.1% Triton X-100 in TBS for 5-10 minutes and blocked with 3% BSA-PBS for 30 minutes at room temperature. Cells were probed with the primary antibody in 3% BSA-PBS and incubated overnight at 4 °C in a humidified chamber. Cells were washed with PBST and incubated with a DyLight 594-conjugated secondary antibody (red) in PBS at room temperature in the dark. DAPI was used to stain the cell nuclei (blue).

#### **Anti-Ataxin 1 (pS775) Antibody - Background**

KLH-conjugated synthetic peptide encompassing a sequence within the C-term region of human Ataxin 1 (pS775). The exact sequence is proprietary.