

Anti-BMP6 Antibody
Rabbit polyclonal antibody to BMP6
Catalog # AP60434**Specification**

Anti-BMP6 Antibody - Product Information

Application	WB
Primary Accession	P22004
Reactivity	Human, Mouse, Rat
Host	Rabbit
Clonality	Polyclonal
Calculated MW	57226

Anti-BMP6 Antibody - Additional Information**Gene ID** 654**Other Names**

VGR; Bone morphogenetic protein 6; BMP-6; VG-1-related protein; VG-1-R; VGR-1

Target/Specificity

Recognizes endogenous levels of BMP6 protein.

Dilution

WB~~WB (1/500 - 1/1000)

Format

Liquid in 0.42% Potassium phosphate, 0.87% Sodium chloride, pH 7.3, 30% glycerol, and 0.09% (W/V) sodium azide.

Storage

Store at -20 °C. Stable for 12 months from date of receipt

Anti-BMP6 Antibody - Protein Information**Name** BMP6**Synonyms** VGR**Function**

Growth factor of the TGF-beta superfamily that plays essential roles in many developmental processes including cartilage and bone formation (PubMed: [31019025](http://www.uniprot.org/citations/31019025)). Also plays an important role in the regulation of HAMP/hepcidin expression and iron metabolism by acting as a ligand for hemojuvelin/HJV (PubMed: [26582087](http://www.uniprot.org/citations/26582087)). Also acts to promote expression of HAMP, potentially via the interaction with its receptor BMPRI1A/ALK3 (PubMed: [30097509](http://www.uniprot.org/citations/30097509)), PubMed: [30097509](#)).

[31800957](http://www.uniprot.org/citations/31800957)). Initiates the canonical BMP signaling cascade by associating with type I receptor ACVR1 and type II receptor ACVR2B (PubMed: [18070108](http://www.uniprot.org/citations/18070108)). In turn, ACVR1 propagates signal by phosphorylating SMAD1/5/8 that travel to the nucleus and act as activators and repressors of transcription of target. Can also signal through non-canonical pathway such as TAZ-Hippo signaling cascade to modulate VEGF signaling by regulating VEGFR2 expression (PubMed: [33021694](http://www.uniprot.org/citations/33021694)).

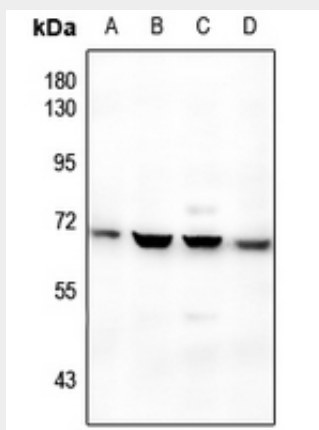
Cellular Location
Secreted.

Anti-BMP6 Antibody - Protocols

Provided below are standard protocols that you may find useful for product applications.

- [Western Blot](#)
- [Blocking Peptides](#)
- [Dot Blot](#)
- [Immunohistochemistry](#)
- [Immunofluorescence](#)
- [Immunoprecipitation](#)
- [Flow Cytometry](#)
- [Cell Culture](#)

Anti-BMP6 Antibody - Images



Western blot analysis of BMP6 expression in PC12 (A), 3T3L1 (B), HuT78 (C), PC3 (D) whole cell lysates.

Anti-BMP6 Antibody - Background

KLH-conjugated synthetic peptide encompassing a sequence within the center region of human BMP6. The exact sequence is proprietary.