

Anti-CABP7 Antibody
Rabbit polyclonal antibody to CABP7
Catalog # AP60436**Specification**

Anti-CABP7 Antibody - Product Information

Application	WB, IH
Primary Accession	Q86V35
Other Accession	Q91ZM8
Reactivity	Human, Mouse, Rat
Host	Rabbit
Clonality	Polyclonal
Calculated MW	24453

Anti-CABP7 Antibody - Additional Information**Gene ID** 164633**Other Names**

CALN2; Calcium-binding protein 7; CaBP7; Calneuron II; Calneuron-2

Target/Specificity

Recognizes endogenous levels of CABP7 protein.

Dilution

WB~~WB (1/500 - 1/1000), IH (1/100 - 1/200)

IH~~WB (1/500 - 1/1000), IH (1/100 - 1/200)

Format

Liquid in 0.42% Potassium phosphate, 0.87% Sodium chloride, pH 7.3, 30% glycerol, and 0.09% (W/V) sodium azide.

Storage

Store at -20 °C. Stable for 12 months from date of receipt

Anti-CABP7 Antibody - Protein Information**Name** CABP7**Synonyms** CALN2**Function**

Negatively regulates Golgi-to-plasma membrane trafficking by interacting with PI4KB and inhibiting its activity.

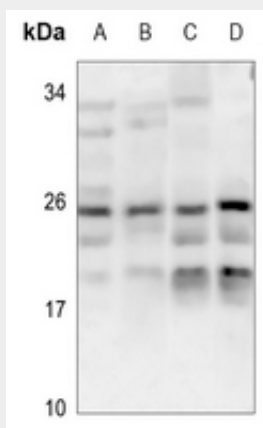
Cellular LocationGolgi apparatus, trans-Golgi network membrane; Single-pass type IV membrane protein.
Cytoplasm, perinuclear region. Cell membrane; Single-pass type IV membrane protein

Anti-CABP7 Antibody - Protocols

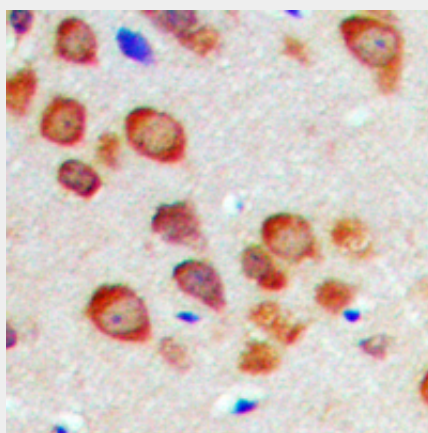
Provided below are standard protocols that you may find useful for product applications.

- [Western Blot](#)
- [Blocking Peptides](#)
- [Dot Blot](#)
- [Immunohistochemistry](#)
- [Immunofluorescence](#)
- [Immunoprecipitation](#)
- [Flow Cytometry](#)
- [Cell Culture](#)

Anti-CABP7 Antibody - Images



Western blot analysis of CABP7 expression in LOVO (A), HEK293T (B), mouse spleen (C), rat spleen (D) whole cell lysates.



Immunohistochemical analysis of CABP7 staining in human brain formalin fixed paraffin embedded tissue section. The section was pre-treated using heat mediated antigen retrieval with sodium citrate buffer (pH 6.0). The section was then incubated with the antibody at room temperature and detected using an HRP conjugated compact polymer system. DAB was used as the chromogen. The section was then counterstained with haematoxylin and mounted with DPX.

Anti-CABP7 Antibody - Background

KLH-conjugated synthetic peptide encompassing a sequence within the N-term region of human

CABP7. The exact sequence is proprietary.