

Anti-CDC42EP5 Antibody
Rabbit polyclonal antibody to CDC42EP5
Catalog # AP60439**Specification**

Anti-CDC42EP5 Antibody - Product Information

Application	WB
Primary Accession	Q6NZY7
Reactivity	Human, Mouse, Rat
Host	Rabbit
Clonality	Polyclonal
Calculated MW	15207

Anti-CDC42EP5 Antibody - Additional Information**Gene ID** 148170**Other Names**

BORG3; CEP5; Cdc42 effector protein 5; Binder of Rho GTPases 3

Target/Specificity

Recognizes endogenous levels of CDC42EP5 protein.

Dilution

WB~~WB (1/500 - 1/1000)

Format

Liquid in 0.42% Potassium phosphate, 0.87% Sodium chloride, pH 7.3, 30% glycerol, and 0.09% (W/V) sodium azide.

Storage

Store at -20 °C. Stable for 12 months from date of receipt

Anti-CDC42EP5 Antibody - Protein Information**Name** CDC42EP5**Synonyms** BORG3, CEP5**Function**

Probably involved in the organization of the actin cytoskeleton. May act downstream of CDC42 to induce actin filament assembly leading to cell shape changes. Induces pseudopodia formation in fibroblasts. Inhibits MAPK8 independently of CDC42 binding. Controls septin organization and this effect is negatively regulated by CDC42 (By similarity).

Cellular Location

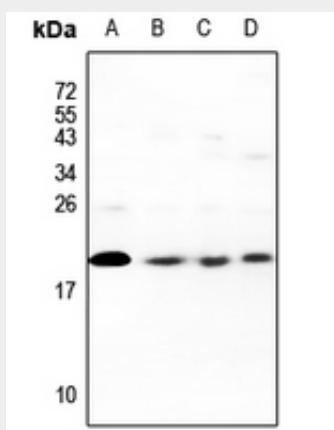
Endomembrane system; Peripheral membrane protein. Cytoplasm, cytoskeleton

Anti-CDC42EP5 Antibody - Protocols

Provided below are standard protocols that you may find useful for product applications.

- [Western Blot](#)
- [Blocking Peptides](#)
- [Dot Blot](#)
- [Immunohistochemistry](#)
- [Immunofluorescence](#)
- [Immunoprecipitation](#)
- [Flow Cytometry](#)
- [Cell Culture](#)

Anti-CDC42EP5 Antibody - Images



Western blot analysis of CDC42EP5 expression in CT26 (A), PC12 (B), HepG2 (C), A549 (D) whole cell lysates.

Anti-CDC42EP5 Antibody - Background

KLH-conjugated synthetic peptide encompassing a sequence within the N-term region of human CDC42EP5. The exact sequence is proprietary.