

Anti-CPT1B Antibody
Rabbit polyclonal antibody to CPT1B
Catalog # AP60445**Specification**

Anti-CPT1B Antibody - Product Information

Application	WB, IHC
Primary Accession	O92523
Reactivity	Human, Mouse, Rat
Host	Rabbit
Clonality	Polyclonal
Calculated MW	87801

Anti-CPT1B Antibody - Additional Information**Gene ID** 1375**Other Names**

KIAA1670; Carnitine O-palmitoyltransferase 1, muscle isoform; CPT1-M; Carnitine O-palmitoyltransferase I, muscle isoform; CPT I; CPTI-M; Carnitine palmitoyltransferase 1B; Carnitine palmitoyltransferase I-like protein

Target/Specificity

KLH-conjugated synthetic peptide encompassing a sequence within the center region of human CPT1B. The exact sequence is proprietary.

Dilution

WB~~WB (1/500 - 1/1000), IH (1/100 - 1/200)
IHC~~1:100~500

Format

Liquid in 0.42% Potassium phosphate, 0.87% Sodium chloride, pH 7.3, 30% glycerol, and 0.09% (W/V) sodium azide.

Storage

Store at -20 °C. Stable for 12 months from date of receipt

Anti-CPT1B Antibody - Protein Information**Name** CPT1B**Synonyms** KIAA1670**Function**

Catalyzes the transfer of the acyl group of long-chain fatty acid-CoA conjugates onto carnitine, an essential step for the mitochondrial uptake of long-chain fatty acids and their subsequent beta-oxidation in the mitochondrion.

Cellular Location

Mitochondrion outer membrane; Multi-pass membrane protein

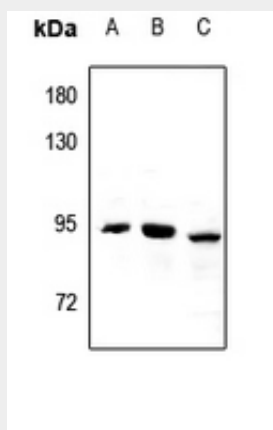
Tissue Location

Strong expression in heart and skeletal muscle. No expression in liver and kidney

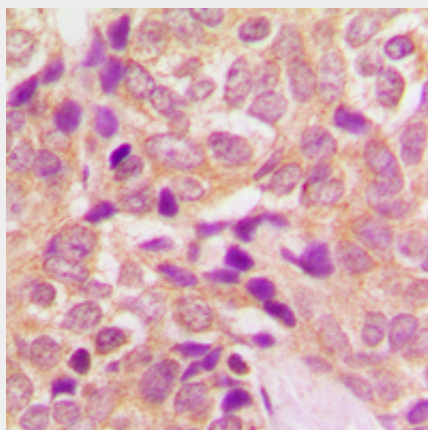
Anti-CPT1B Antibody - Protocols

Provided below are standard protocols that you may find useful for product applications.

- [Western Blot](#)
- [Blocking Peptides](#)
- [Dot Blot](#)
- [Immunohistochemistry](#)
- [Immunofluorescence](#)
- [Immunoprecipitation](#)
- [Flow Cytometry](#)
- [Cell Culture](#)

Anti-CPT1B Antibody - Images

Western blot analysis of CPT1B expression in mouse heart (A), rat heart (B), PC3 (C) whole cell lysates.



Immunohistochemical analysis of CPT1B staining in human breast cancer formalin fixed paraffin embedded tissue section. The section was pre-treated using heat mediated antigen retrieval with

sodium citrate buffer (pH 6.0). The section was then incubated with the antibody at room temperature and detected using an HRP conjugated compact polymer system. DAB was used as the chromogen. The section was then counterstained with haematoxylin and mounted with DPX.

Anti-CPT1B Antibody - Background

KLH-conjugated synthetic peptide encompassing a sequence within the center region of human CPT1B. The exact sequence is proprietary.