

Anti-DDX55 Antibody
Rabbit polyclonal antibody to DDX55
Catalog # AP60451**Specification**

Anti-DDX55 Antibody - Product Information

Application	WB, IH
Primary Accession	Q8NHQ9
Reactivity	Human
Host	Rabbit
Clonality	Polyclonal
Calculated MW	68547

Anti-DDX55 Antibody - Additional Information**Gene ID** 57696**Other Names**

KIAA1595; ATP-dependent RNA helicase DDX55; DEAD box protein 55

Target/Specificity

Recognizes endogenous levels of DDX55 protein.

Dilution

WB~~WB (1/500 - 1/1000), IH (1/100 - 1/200)

IH~~WB (1/500 - 1/1000), IH (1/100 - 1/200)

Format

Liquid in 0.42% Potassium phosphate, 0.87% Sodium chloride, pH 7.3, 30% glycerol, and 0.09% (W/V) sodium azide.

Storage

Store at -20 °C. Stable for 12 months from date of receipt

Anti-DDX55 Antibody - Protein Information**Name** DDX55**Synonyms** KIAA1595**Function**

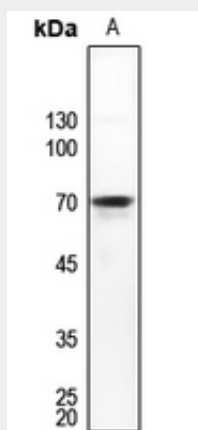
Probable ATP-binding RNA helicase.

Anti-DDX55 Antibody - Protocols

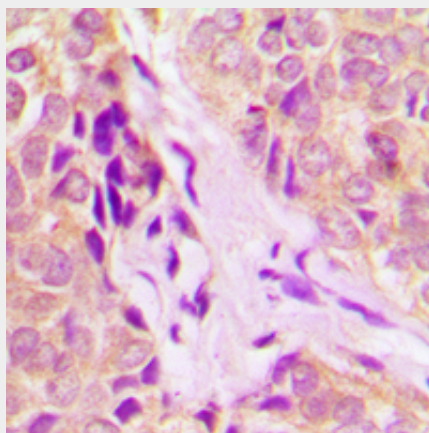
Provided below are standard protocols that you may find useful for product applications.

- [Western Blot](#)
- [Blocking Peptides](#)
- [Dot Blot](#)
- [Immunohistochemistry](#)
- [Immunofluorescence](#)
- [Immunoprecipitation](#)
- [Flow Cytometry](#)
- [Cell Culture](#)

Anti-DDX55 Antibody - Images



Western blot analysis of DDX55 expression in HepG2 (A) whole cell lysates.



Immunohistochemical analysis of DDX55 staining in human breast cancer formalin fixed paraffin embedded tissue section. The section was pre-treated using heat mediated antigen retrieval with sodium citrate buffer (pH 6.0). The section was then incubated with the antibody at room temperature and detected using an HRP conjugated compact polymer system. DAB was used as the chromogen. The section was then counterstained with haematoxylin and mounted with DPX.

Anti-DDX55 Antibody - Background

KLH-conjugated synthetic peptide encompassing a sequence within the center region of human DDX55. The exact sequence is proprietary.