

Anti-EPN2 Antibody
Rabbit polyclonal antibody to EPN2
Catalog # AP60457**Specification**

Anti-EPN2 Antibody - Product Information

Application	WB, IHC
Primary Accession	O95208
Other Accession	Q8CHU3
Reactivity	Human, Mouse, Rat, Zebrafish, Monkey, Bovine
Host	Rabbit
Clonality	Polyclonal
Calculated MW	68482

Anti-EPN2 Antibody - Additional Information**Gene ID** 22905**Other Names**

KIAA1065; Epsin-2; EPS-15-interacting protein 2

Target/Specificity

KLH-conjugated synthetic peptide encompassing a sequence within the center region of human EPN2. The exact sequence is proprietary.

Dilution

WB~~WB (1/500 - 1/1000), IH (1/100 - 1/200)

IHC~~1:100~500

Format

Liquid in 0.42% Potassium phosphate, 0.87% Sodium chloride, pH 7.3, 30% glycerol, and 0.09% (W/V) sodium azide.

Storage

Store at -20 °C. Stable for 12 months from date of receipt

Anti-EPN2 Antibody - Protein Information**Name** EPN2**Synonyms** KIAA1065**Function**

Plays a role in the formation of clathrin-coated invaginations and endocytosis.

Cellular Location

Cytoplasm. Cytoplasmic vesicle, clathrin-coated vesicle. Note=In punctate structures throughout

the cell, associated with clathrin-coated vesicles, and particularly concentrated in the region of the Golgi complex

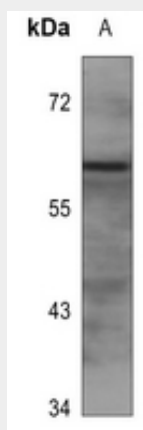
Tissue Location

Highest expression is found in brain. Detected at lower levels in lung and liver.

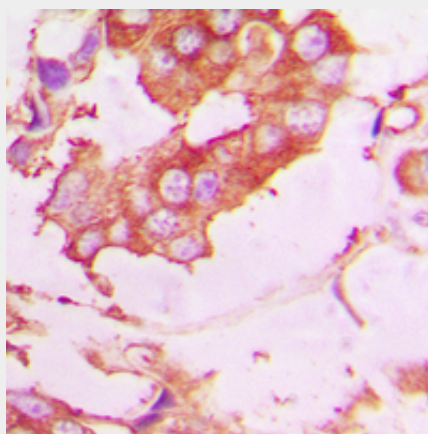
Anti-EPN2 Antibody - Protocols

Provided below are standard protocols that you may find useful for product applications.

- [Western Blot](#)
- [Blocking Peptides](#)
- [Dot Blot](#)
- [Immunohistochemistry](#)
- [Immunofluorescence](#)
- [Immunoprecipitation](#)
- [Flow Cytometry](#)
- [Cell Culture](#)

Anti-EPN2 Antibody - Images

Western blot analysis of EPN2 expression in rat liver (A) whole cell lysates.



Immunohistochemical analysis of EPN2 staining in human lung cancer formalin fixed paraffin embedded tissue section. The section was pre-treated using heat mediated antigen retrieval with sodium citrate buffer (pH 6.0). The section was then incubated with the antibody at room

temperature and detected using an HRP conjugated compact polymer system. DAB was used as the chromogen. The section was then counterstained with haematoxylin and mounted with DPX.

Anti-EPN2 Antibody - Background

KLH-conjugated synthetic peptide encompassing a sequence within the center region of human EPN2. The exact sequence is proprietary.