

Anti-EPN3 Antibody
Rabbit polyclonal antibody to EPN3
Catalog # AP60458**Specification**

Anti-EPN3 Antibody - Product Information

Application	WB, IHC
Primary Accession	O9H201
Reactivity	Human, Mouse, Rat
Host	Rabbit
Clonality	Polyclonal
Calculated MW	68222

Anti-EPN3 Antibody - Additional Information**Gene ID** 55040**Other Names**

Epsin-3; EPS-15-interacting protein 3

Target/Specificity

KLH-conjugated synthetic peptide encompassing a sequence within the center region of human EPN3. The exact sequence is proprietary.

Dilution

WB~~WB (1/500 - 1/1000), IH (1/100 - 1/200)

IHC~~1:100~500

Format

Liquid in 0.42% Potassium phosphate, 0.87% Sodium chloride, pH 7.3, 30% glycerol, and 0.09% (W/V) sodium azide.

Storage

Store at -20 °C. Stable for 12 months from date of receipt

Anti-EPN3 Antibody - Protein Information**Name** EPN3**Cellular Location**Cytoplasm. Cytoplasm, perinuclear region Cytoplasmic vesicle, clathrin-coated vesicle. Nucleus
Note=Concentrated in the perinuclear region and associated with clathrin-coated vesicles close to the cell periphery. May shuttle to the nucleus**Tissue Location**

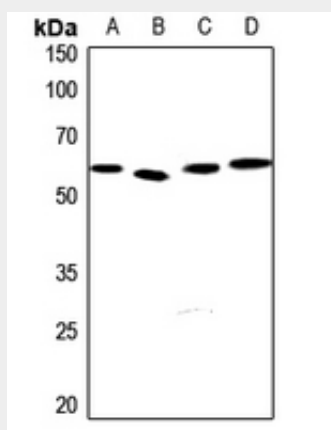
Detected in migrating keratinocytes from wounded skin, but not in differentiating keratinocytes or in normal skin Detected in chronic wounds, basal cell carcinoma and ulcerative colitis.

Anti-EPN3 Antibody - Protocols

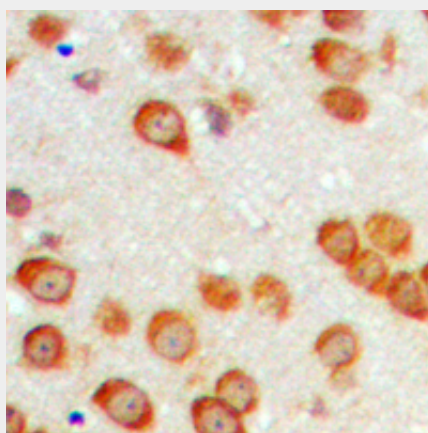
Provided below are standard protocols that you may find useful for product applications.

- [Western Blot](#)
- [Blocking Peptides](#)
- [Dot Blot](#)
- [Immunohistochemistry](#)
- [Immunofluorescence](#)
- [Immunoprecipitation](#)
- [Flow Cytometry](#)
- [Cell Culture](#)

Anti-EPN3 Antibody - Images



Western blot analysis of EPN3 expression in HEK293T (A), H446 (B), mouse testis (C), rat testis (D) whole cell lysates.



Immunohistochemical analysis of EPN3 staining in human brain formalin fixed paraffin embedded tissue section. The section was pre-treated using heat mediated antigen retrieval with sodium citrate buffer (pH 6.0). The section was then incubated with the antibody at room temperature and detected using an HRP conjugated compact polymer system. DAB was used as the chromogen. The section was then counterstained with haematoxylin and mounted with DPX.

Anti-EPN3 Antibody - Background

KLH-conjugated synthetic peptide encompassing a sequence within the center region of human

EPN3. The exact sequence is proprietary.