

Anti-Fibulin 5 Antibody
Rabbit polyclonal antibody to Fibulin 5
Catalog # AP60461**Specification**

Anti-Fibulin 5 Antibody - Product Information

Application	WB
Primary Accession	O9UBX5
Other Accession	O9WVH9
Reactivity	Human, Mouse, Rat, Bovine
Host	Rabbit
Clonality	Polyclonal
Calculated MW	50180

Anti-Fibulin 5 Antibody - Additional Information**Gene ID** 10516**Other Names**

DANCE; Fibulin-5; FIBL-5; Developmental arteries and neural crest EGF-like protein; Dance; Urine p50 protein; UP50

Target/Specificity

Recognizes endogenous levels of Fibulin 5 protein.

Dilution

WB~~WB (1/500 - 1/1000)

Format

Liquid in 0.42% Potassium phosphate, 0.87% Sodium chloride, pH 7.3, 30% glycerol, and 0.09% (W/V) sodium azide.

Storage

Store at -20 °C. Stable for 12 months from date of receipt

Anti-Fibulin 5 Antibody - Protein Information**Name** FBLN5**Synonyms** DANCE**Function**

Essential for elastic fiber formation, is involved in the assembly of continuous elastin (ELN) polymer and promotes the interaction of microfibrils and ELN (PubMed:18185537). Stabilizes and organizes elastic fibers in the skin, lung and vasculature (By similarity). Promotes adhesion of endothelial cells through interaction of integrins and the RGD motif. Vascular ligand for integrin receptors which may play a role in vascular development and remodeling (PubMed:10428823). May act as an adapter that mediates the interaction between FBN1 and ELN (PubMed:17255108).

Cellular Location

Secreted. Secreted, extracellular space, extracellular matrix. Note=co-localizes with ELN in elastic fibers.

Tissue Location

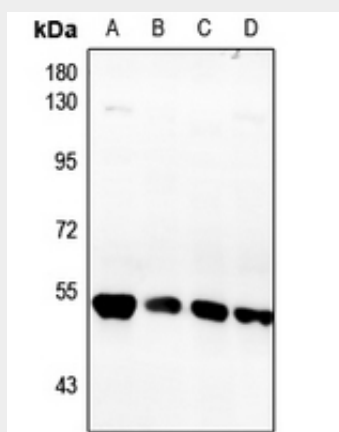
Expressed in skin fibroblasts (at protein level) (PubMed:17035250). Expressed predominantly in heart, ovary, and colon but also in kidney, pancreas, testis, lung and placenta. Not detectable in brain, liver, thymus, prostate, or peripheral blood leukocytes (PubMed:10428823).

Anti-Fibulin 5 Antibody - Protocols

Provided below are standard protocols that you may find useful for product applications.

- [Western Blot](#)
- [Blocking Peptides](#)
- [Dot Blot](#)
- [Immunohistochemistry](#)
- [Immunofluorescence](#)
- [Immunoprecipitation](#)
- [Flow Cytometry](#)
- [Cell Culture](#)

Anti-Fibulin 5 Antibody - Images



Western blot analysis of Fibulin 5 expression in Hela (A), LOVO (B), CT26 (C), PC12 (D) whole cell lysates.

Anti-Fibulin 5 Antibody - Background

KLH-conjugated synthetic peptide encompassing a sequence within the center region of human Fibulin 5. The exact sequence is proprietary.