

**Anti-MEF2D (pS444) Antibody**  
**Rabbit polyclonal antibody to MEF2D (pS444)**  
**Catalog # AP60481****Specification**

---

**Anti-MEF2D (pS444) Antibody - Product Information**

Application	WB, IHC
Primary Accession	<a href="#">Q14814</a>
Other Accession	<a href="#">Q63943</a>
Reactivity	Human, Mouse, Rat, Pig, Bovine
Host	Rabbit
Clonality	Polyclonal
Calculated MW	55938

**Anti-MEF2D (pS444) Antibody - Additional Information****Gene ID** 4209**Other Names**

Myocyte-specific enhancer factor 2D

**Target/Specificity**

Recognizes endogenous levels of MEF2D (pS444) protein.

**Dilution**

WB~~WB (1/500 - 1/1000), IH (1/100 - 1/200)

IHC~~1:100~500

**Format**

Liquid in 0.42% Potassium phosphate, 0.87% Sodium chloride, pH 7.3, 30% glycerol, and 0.09% (W/V) sodium azide.

**Storage**

Store at -20 °C. Stable for 12 months from date of receipt

**Anti-MEF2D (pS444) Antibody - Protein Information****Name** MEF2D**Function**

Transcriptional activator which binds specifically to the MEF2 element, 5'-YTA[AT](4)TAR-3', found in numerous muscle-specific, growth factor- and stress-induced genes. Mediates cellular functions not only in skeletal and cardiac muscle development, but also in neuronal differentiation and survival. Plays diverse roles in the control of cell growth, survival and apoptosis via p38 MAPK signaling in muscle-specific and/or growth factor-related transcription. Plays a critical role in the regulation of neuronal apoptosis (By similarity).

**Cellular Location**

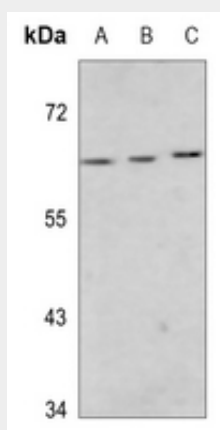
Nucleus {ECO:0000255|PROSITE-ProRule:PRU00251, ECO:0000269|PubMed:12691662, ECO:0000269|PubMed:15743823} Note=Translocated by HDAC4 to nuclear dots

### Anti-MEF2D (pS444) Antibody - Protocols

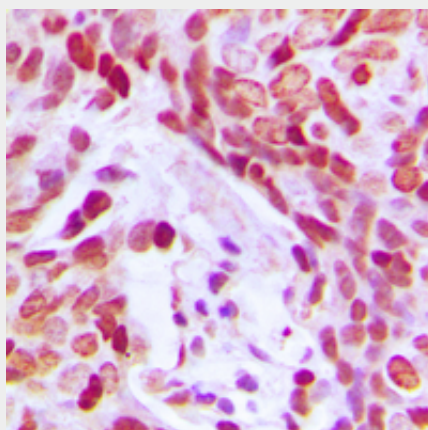
Provided below are standard protocols that you may find useful for product applications.

- [Western Blot](#)
- [Blocking Peptides](#)
- [Dot Blot](#)
- [Immunohistochemistry](#)
- [Immunofluorescence](#)
- [Immunoprecipitation](#)
- [Flow Cytometry](#)
- [Cell Culture](#)

### Anti-MEF2D (pS444) Antibody - Images



Western blot analysis of MEF2D (pS444) expression in HEK293T (A), Jurkat (B), U2OS (C) whole cell lysates.



Immunohistochemical analysis of MEF2D (pS444) staining in human breast cancer formalin fixed paraffin embedded tissue section. The section was pre-treated using heat mediated antigen retrieval with sodium citrate buffer (pH 6.0). The section was then incubated with the antibody at room temperature and detected using an HRP conjugated compact polymer system. DAB was used as the chromogen. The section was then counterstained with haematoxylin and mounted

with DPX.

**Anti-MEF2D (pS444) Antibody - Background**

KLH-conjugated synthetic peptide encompassing a sequence within the C-term region of human MEF2D (pS444). The exact sequence is proprietary.