

**Anti-MNK1 Antibody**  
**Rabbit polyclonal antibody to MNK1**  
**Catalog # AP60484****Specification**

---

**Anti-MNK1 Antibody - Product Information**

Application	WB, IHC
Primary Accession	<a href="#">O9BUB5</a>
Other Accession	<a href="#">O08605</a>
Reactivity	Human, Mouse, Bovine
Host	Rabbit
Clonality	Polyclonal
Calculated MW	51342

**Anti-MNK1 Antibody - Additional Information****Gene ID** 8569**Other Names**

MNK1; MAP kinase-interacting serine/threonine-protein kinase 1; MAP kinase signal-integrating kinase 1; MAPK signal-integrating kinase 1; Mnk1

**Target/Specificity**

Recognizes endogenous levels of MNK1 protein.

**Dilution**WB~~WB (1/500 - 1/1000), IH (1/100 - 1/200)  
IHC~~1:100~500**Format**

Liquid in 0.42% Potassium phosphate, 0.87% Sodium chloride, pH 7.3, 30% glycerol, and 0.09% (W/V) sodium azide.

**Storage**

Store at -20 °C.Stable for 12 months from date of receipt

**Anti-MNK1 Antibody - Protein Information****Name** MKNK1**Synonyms** MNK1**Function**

May play a role in the response to environmental stress and cytokines. Appears to regulate translation by phosphorylating EIF4E, thus increasing the affinity of this protein for the 7-methylguanosine- containing mRNA cap.

**Cellular Location**

[Isoform 2]: Cytoplasm.

#### Tissue Location

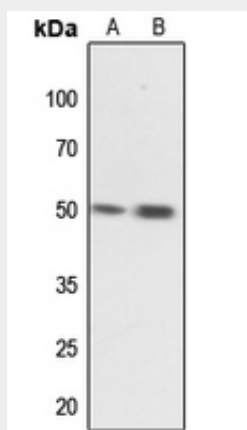
Ubiquitous..

#### Anti-MNK1 Antibody - Protocols

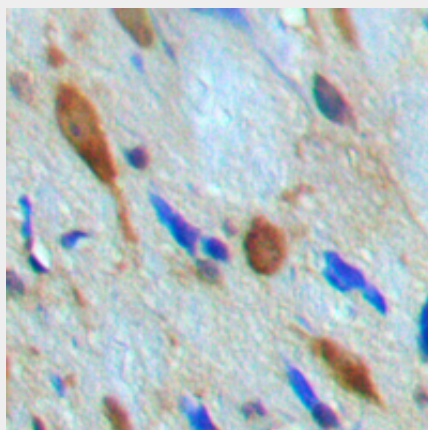
Provided below are standard protocols that you may find useful for product applications.

- [Western Blot](#)
- [Blocking Peptides](#)
- [Dot Blot](#)
- [Immunohistochemistry](#)
- [Immunofluorescence](#)
- [Immunoprecipitation](#)
- [Flow Cytometry](#)
- [Cell Culture](#)

#### Anti-MNK1 Antibody - Images



Western blot analysis of MNK1 expression in Hela (A), H446 (B) whole cell lysates.



Immunohistochemical analysis of MNK1 staining in human brain formalin fixed paraffin embedded tissue section. The section was pre-treated using heat mediated antigen retrieval with sodium citrate buffer (pH 6.0). The section was then incubated with the antibody at room temperature and detected using an HRP conjugated compact polymer system. DAB was used as the

chromogen. The section was then counterstained with haematoxylin and mounted with DPX.

#### **Anti-MNK1 Antibody - Background**

KLH-conjugated synthetic peptide encompassing a sequence within the center region of human MNK1. The exact sequence is proprietary.