

**Anti-MRPL40 Antibody**  
**Rabbit polyclonal antibody to MRPL40**  
**Catalog # AP60486****Specification**

---

**Anti-MRPL40 Antibody - Product Information**

|                   |                        |
|-------------------|------------------------|
| Application       | WB, IHC                |
| Primary Accession | <a href="#">O9NQ50</a> |
| Other Accession   | <a href="#">O9Z2Q5</a> |
| Reactivity        | Human, Mouse, Rat      |
| Host              | Rabbit                 |
| Clonality         | Polyclonal             |
| Calculated MW     | 24490                  |

**Anti-MRPL40 Antibody - Additional Information****Gene ID** 64976**Other Names**

NLVCF; URIM; 39S ribosomal protein L40 mitochondrial; L40mt; MRP-L40; Nuclear localization signal-containing protein deleted in velocardiofacial syndrome; Up-regulated in metastasis

**Target/Specificity**

Recognizes endogenous levels of MRPL40 protein.

**Dilution**WB~~WB (1/500 - 1/1000), IH (1/100 - 1/200)  
IHC~~1:100~500**Format**

Liquid in 0.42% Potassium phosphate, 0.87% Sodium chloride, pH 7.3, 30% glycerol, and 0.09% (W/V) sodium azide.

**Storage**

Store at -20 °C.Stable for 12 months from date of receipt

**Anti-MRPL40 Antibody - Protein Information****Name** MRPL40**Synonyms** NLVCF, URIM**Cellular Location**

Mitochondrion

**Tissue Location**

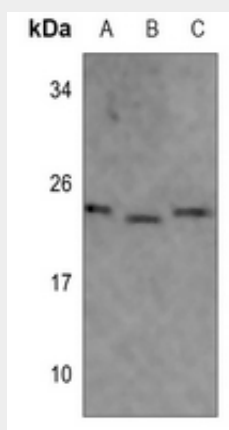
Ubiquitous..

## Anti-MRPL40 Antibody - Protocols

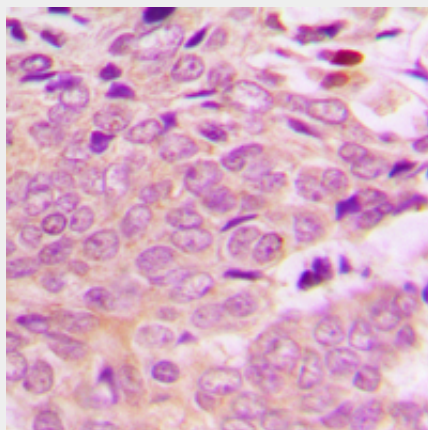
Provided below are standard protocols that you may find useful for product applications.

- [Western Blot](#)
- [Blocking Peptides](#)
- [Dot Blot](#)
- [Immunohistochemistry](#)
- [Immunofluorescence](#)
- [Immunoprecipitation](#)
- [Flow Cytometry](#)
- [Cell Culture](#)

## Anti-MRPL40 Antibody - Images



Western blot analysis of MRPL40 expression in mouse muscle (A), mouse liver (B), rat muscle (C) whole cell lysates.



Immunohistochemical analysis of MRPL40 staining in human breast cancer formalin fixed paraffin embedded tissue section. The section was pre-treated using heat mediated antigen retrieval with sodium citrate buffer (pH 6.0). The section was then incubated with the antibody at room temperature and detected using an HRP conjugated compact polymer system. DAB was used as the chromogen. The section was then counterstained with haematoxylin and mounted with DPX.

## Anti-MRPL40 Antibody - Background

KLH-conjugated synthetic peptide encompassing a sequence within the center region of human

MRPL40. The exact sequence is proprietary.