

Anti-MRPL51 Antibody
Rabbit polyclonal antibody to MRPL51
Catalog # AP60487**Specification**

Anti-MRPL51 Antibody - Product Information

Application	WB, IHC
Primary Accession	Q4U2R6
Other Accession	Q9CPY1
Reactivity	Human, Mouse, Rat, Monkey
Host	Rabbit
Clonality	Polyclonal
Calculated MW	15095

Anti-MRPL51 Antibody - Additional Information**Gene ID** 51258**Other Names**

MRP64; 39S ribosomal protein L51 mitochondrial; L51mt; MRP-L51; bMRP-64; bMRP64

Target/Specificity

Recognizes endogenous levels of MRPL51 protein.

Dilution

WB~~WB (1/500 - 1/1000), IH (1/100 - 1/200)

IHC~~1:100~500

Format

Liquid in 0.42% Potassium phosphate, 0.87% Sodium chloride, pH 7.3, 30% glycerol, and 0.09% (W/V) sodium azide.

Storage

Store at -20 °C. Stable for 12 months from date of receipt

Anti-MRPL51 Antibody - Protein Information**Name** MRPL51**Synonyms** MRP64**Cellular Location**

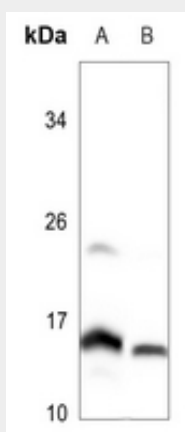
Mitochondrion

Anti-MRPL51 Antibody - Protocols

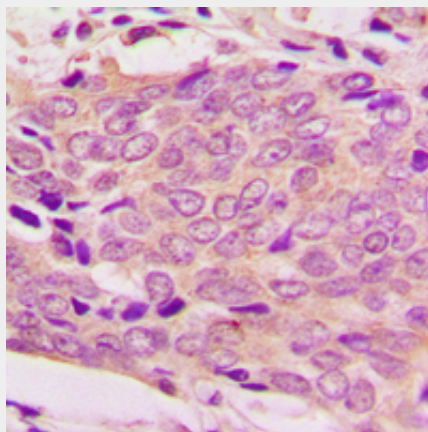
Provided below are standard protocols that you may find useful for product applications.

- [Western Blot](#)
- [Blocking Peptides](#)
- [Dot Blot](#)
- [Immunohistochemistry](#)
- [Immunofluorescence](#)
- [Immunoprecipitation](#)
- [Flow Cytometry](#)
- [Cell Culture](#)

Anti-MRPL51 Antibody - Images



Western blot analysis of MRPL51 expression in Jurkat (A), rat testis (B) whole cell lysates.



Immunohistochemical analysis of MRPL51 staining in human breast cancer formalin fixed paraffin embedded tissue section. The section was pre-treated using heat mediated antigen retrieval with sodium citrate buffer (pH 6.0). The section was then incubated with the antibody at room temperature and detected using an HRP conjugated compact polymer system. DAB was used as the chromogen. The section was then counterstained with haematoxylin and mounted with DPX.

Anti-MRPL51 Antibody - Background

KLH-conjugated synthetic peptide encompassing a sequence within the center region of human MRPL51. The exact sequence is proprietary.