

Anti-MRPL54 Antibody
Rabbit polyclonal antibody to MRPL54
Catalog # AP60488**Specification**

Anti-MRPL54 Antibody - Product Information

Application	WB, IHC
Primary Accession	Q6P161
Reactivity	Human
Host	Rabbit
Clonality	Polyclonal
Calculated MW	15819

Anti-MRPL54 Antibody - Additional Information**Gene ID** 116541**Other Names**

39S ribosomal protein L54 mitochondrial; L54mt; MRP-L54

Target/Specificity

KLH-conjugated synthetic peptide encompassing a sequence within the center region of human MRPL54. The exact sequence is proprietary.

Dilution

WB~~WB (1/500 - 1/1000), IH (1/100 - 1/200)

IHC~~1:100~500

Format

Liquid in 0.42% Potassium phosphate, 0.87% Sodium chloride, pH 7.3, 30% glycerol, and 0.09% (W/V) sodium azide.

Storage

Store at -20 °C. Stable for 12 months from date of receipt

Anti-MRPL54 Antibody - Protein Information**Name** MRPL54**Cellular Location**

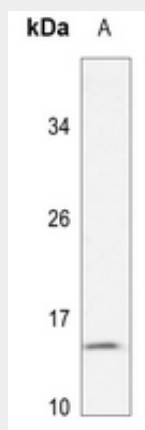
Mitochondrion

Anti-MRPL54 Antibody - Protocols

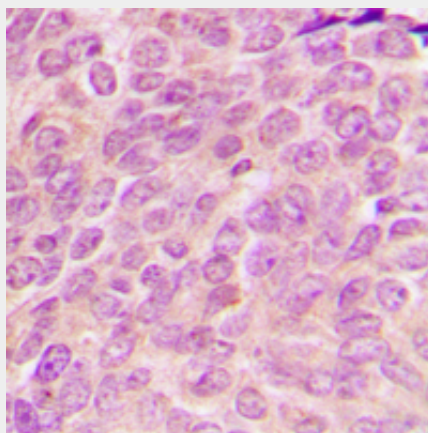
Provided below are standard protocols that you may find useful for product applications.

- [Western Blot](#)
- [Blocking Peptides](#)
- [Dot Blot](#)
- [Immunohistochemistry](#)
- [Immunofluorescence](#)
- [Immunoprecipitation](#)
- [Flow Cytometry](#)
- [Cell Culture](#)

Anti-MRPL54 Antibody - Images



Western blot analysis of MRPL54 expression in Jurkat (A) whole cell lysates.



Immunohistochemical analysis of MRPL54 staining in human breast cancer formalin fixed paraffin embedded tissue section. The section was pre-treated using heat mediated antigen retrieval with sodium citrate buffer (pH 6.0). The section was then incubated with the antibody at room temperature and detected using an HRP conjugated compact polymer system. DAB was used as the chromogen. The section was then counterstained with haematoxylin and mounted with DPX.

Anti-MRPL54 Antibody - Background

KLH-conjugated synthetic peptide encompassing a sequence within the center region of human MRPL54. The exact sequence is proprietary.