

Anti-Delta Opioid Receptor (pS363) Antibody
Rabbit polyclonal antibody to Delta Opioid Receptor (pS363)
Catalog # AP60495**Specification**

Anti-Delta Opioid Receptor (pS363) Antibody - Product Information

Application	WB, IF/IC, IHC
Primary Accession	P41143
Other Accession	P32300
Reactivity	Human, Mouse, Rat, Pig
Host	Rabbit
Clonality	Polyclonal
Calculated MW	40369

Anti-Delta Opioid Receptor (pS363) Antibody - Additional Information**Gene ID** 4985**Other Names**

OPRD; Delta-type opioid receptor; D-OR-1; DOR-1

Target/Specificity

Recognizes endogenous levels of Delta Opioid Receptor (pS363) protein.

Dilution

WB~~WB (1/500 - 1/1000), IH (1/100 - 1/200), IF/IC (1/100 - 1/500)

IF/IC~~N/A

IHC~~1:100~500

Format

Liquid in 0.42% Potassium phosphate, 0.87% Sodium chloride, pH 7.3, 30% glycerol, and 0.09% (W/V) sodium azide.

Storage

Store at -20 °C. Stable for 12 months from date of receipt

Anti-Delta Opioid Receptor (pS363) Antibody - Protein Information**Name** OPRD1**Synonyms** OPRD**Function**

G-protein coupled receptor that functions as a receptor for endogenous enkephalins and for a subset of other opioids. Ligand binding causes a conformation change that triggers signaling via guanine nucleotide-binding proteins (G proteins) and modulates the activity of down-stream effectors, such as adenylate cyclase. Signaling leads to the inhibition of adenylate cyclase activity. Inhibits neurotransmitter release by reducing calcium ion currents and increasing potassium ion

conductance. Plays a role in the perception of pain and in opiate-mediated analgesia. Plays a role in developing analgesic tolerance to morphine.

Cellular Location

Cell membrane; Multi-pass membrane protein

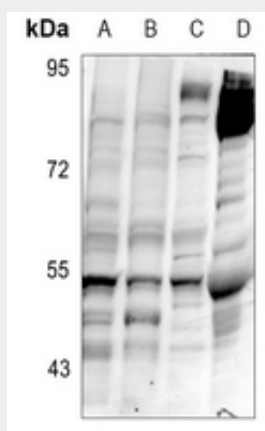
Tissue Location

Detected in oocytes (at protein level). Detected in brain cortex, hypothalamus, hippocampus and olfactory bulb. Detected in oocytes.

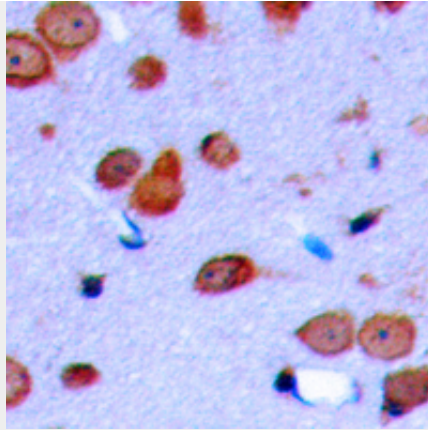
Anti-Delta Opioid Receptor (pS363) Antibody - Protocols

Provided below are standard protocols that you may find useful for product applications.

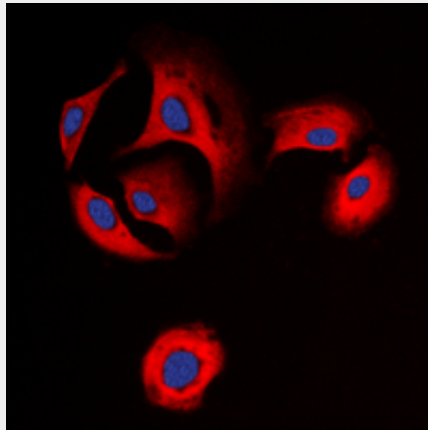
- [Western Blot](#)
- [Blocking Peptides](#)
- [Dot Blot](#)
- [Immunohistochemistry](#)
- [Immunofluorescence](#)
- [Immunoprecipitation](#)
- [Flow Cytometry](#)
- [Cell Culture](#)

Anti-Delta Opioid Receptor (pS363) Antibody - Images

Western blot analysis of Delta Opioid Receptor (pS363) expression in A2780 (A), U87MG (B), mouse brain (C), rat muscle (D) whole cell lysates.



Immunohistochemical analysis of Delta Opioid Receptor (pS363) staining in human brain formalin fixed paraffin embedded tissue section. The section was pre-treated using heat mediated antigen retrieval with sodium citrate buffer (pH 6.0). The section was then incubated with the antibody at room temperature and detected using an HRP conjugated compact polymer system. DAB was used as the chromogen. The section was then counterstained with haematoxylin and mounted with DPX.



Immunofluorescent analysis of Delta Opioid Receptor (pS363) staining in SKNSH cells. Formalin-fixed cells were permeabilized with 0.1% Triton X-100 in TBS for 5-10 minutes and blocked with 3% BSA-PBS for 30 minutes at room temperature. Cells were probed with the primary antibody in 3% BSA-PBS and incubated overnight at 4 °C in a humidified chamber. Cells were washed with PBST and incubated with a DyLight 594-conjugated secondary antibody (red) in PBS at room temperature in the dark. DAPI was used to stain the cell nuclei (blue).

Anti-Delta Opioid Receptor (pS363) Antibody - Background

KLH-conjugated synthetic peptide encompassing a sequence within the C-term region of human Delta Opioid Receptor (pS363). The exact sequence is proprietary.