

**Anti-TOPK (pT9) Antibody**  
**Rabbit polyclonal antibody to TOPK (pT9)**  
**Catalog # AP60497****Specification**

---

**Anti-TOPK (pT9) Antibody - Product Information**

Application	WB, IHC
Primary Accession	<a href="#">Q96KB5</a>
Reactivity	Human
Host	Rabbit
Clonality	Polyclonal
Calculated MW	36085

**Anti-TOPK (pT9) Antibody - Additional Information****Gene ID** 55872**Other Names**

TOPK; Lymphokine-activated killer T-cell-originated protein kinase; Cancer/testis antigen 84; CT84; MAPKK-like protein kinase; Nori-3; PDZ-binding kinase; Spermatogenesis-related protein kinase; SPK; T-LAK cell-originated protein kinase

**Target/Specificity**

KLH-conjugated synthetic peptide encompassing a sequence within the N-term region of human TOPK (pT9). The exact sequence is proprietary.

**Dilution**

WB~~WB (1/500 - 1/1000), IH (1/100 - 1/200)

IHC~~1:100~500

**Format**

Liquid in 0.42% Potassium phosphate, 0.87% Sodium chloride, pH 7.3, 30% glycerol, and 0.09% (W/V) sodium azide.

**Storage**

Store at -20 °C. Stable for 12 months from date of receipt

**Anti-TOPK (pT9) Antibody - Protein Information****Name** PBK**Synonyms** TOPK**Function**

Phosphorylates MAP kinase p38. Seems to be active only in mitosis. May also play a role in the activation of lymphoid cells. When phosphorylated, forms a complex with TP53, leading to TP53 destabilization and attenuation of G2/M checkpoint during doxorubicin- induced DNA damage.

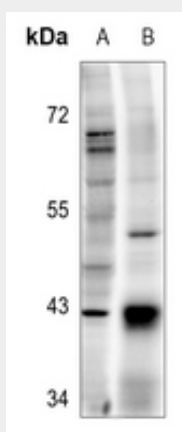
**Tissue Location**

Expressed in the testis and placenta. In the testis, restrictedly expressed in outer cell layer of seminiferous tubules.

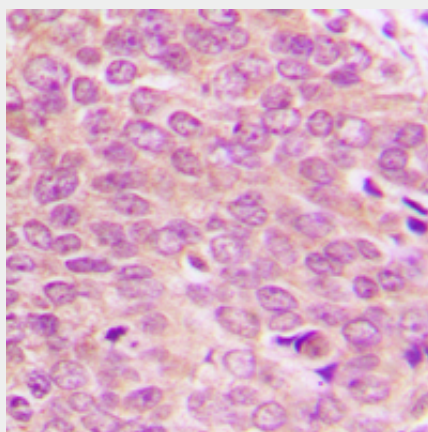
**Anti-TOPK (pT9) Antibody - Protocols**

Provided below are standard protocols that you may find useful for product applications.

- [Western Blot](#)
- [Blocking Peptides](#)
- [Dot Blot](#)
- [Immunohistochemistry](#)
- [Immunofluorescence](#)
- [Immunoprecipitation](#)
- [Flow Cytometry](#)
- [Cell Culture](#)

**Anti-TOPK (pT9) Antibody - Images**

Western blot analysis of TOPK (pT9) expression in Myla2059 (A), SHSY5Y (B) whole cell lysates.



Immunohistochemical analysis of TOPK (pT9) staining in human breast cancer formalin fixed paraffin embedded tissue section. The section was pre-treated using heat mediated antigen retrieval with sodium citrate buffer (pH 6.0). The section was then incubated with the antibody at room temperature and detected using an HRP conjugated compact polymer system. DAB was used as the chromogen. The section was then counterstained with haematoxylin and mounted

with DPX.

**Anti-TOPK (pT9) Antibody - Background**

KLH-conjugated synthetic peptide encompassing a sequence within the N-term region of human TOPK (pT9). The exact sequence is proprietary.