

Anti-PFKM Antibody
Rabbit polyclonal antibody to PFKM
Catalog # AP60499**Specification**

Anti-PFKM Antibody - Product Information

Application	WB, IHC
Primary Accession	P08237
Reactivity	Human, Mouse, Rat
Host	Rabbit
Clonality	Polyclonal
Calculated MW	85183

Anti-PFKM Antibody - Additional Information**Gene ID** 5213**Other Names**PFKX; 6-phosphofructokinase, muscle type; Phosphofructo-1-kinase isozyme A; PFK-A;
Phosphofructokinase-M; Phosphofructokinase 1; Phosphohexokinase**Target/Specificity**

Recognizes endogenous levels of PFKM protein.

DilutionWB~~WB (1/500 - 1/1000), IH (1/100 - 1/200)
IHC~~1:100~500**Format**

Liquid in 0.42% Potassium phosphate, 0.87% Sodium chloride, pH 7.3, 30% glycerol, and 0.09% (W/V) sodium azide.

Storage

Store at -20 °C. Stable for 12 months from date of receipt

Anti-PFKM Antibody - Protein Information**Name** PFKM**Synonyms** PFKX**Function**

Catalyzes the phosphorylation of D-fructose 6-phosphate to fructose 1,6-bisphosphate by ATP, the first committing step of glycolysis.

Cellular Location

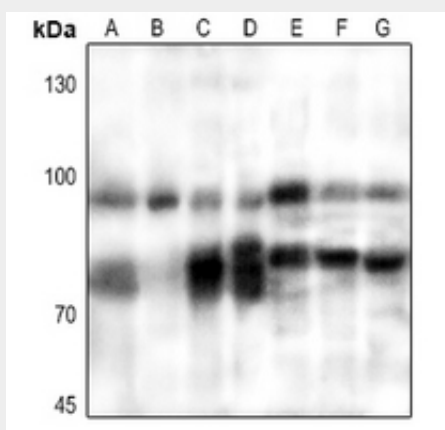
Cytoplasm {ECO:0000255|HAMAP-Rule:MF_03184}.

Anti-PFKM Antibody - Protocols

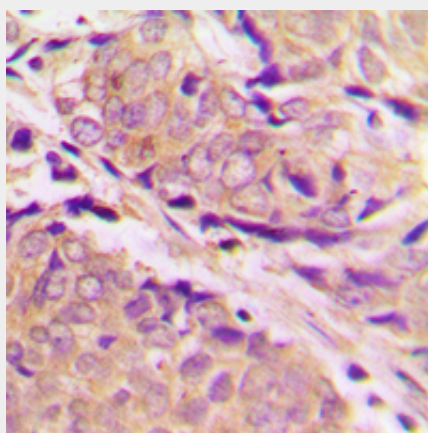
Provided below are standard protocols that you may find useful for product applications.

- [Western Blot](#)
- [Blocking Peptides](#)
- [Dot Blot](#)
- [Immunohistochemistry](#)
- [Immunofluorescence](#)
- [Immunoprecipitation](#)
- [Flow Cytometry](#)
- [Cell Culture](#)

Anti-PFKM Antibody - Images



Western blot analysis of PFKM expression in HEK293T (A), Hela (B), HepG2 (C), H460 (D), mouse lung (E), mouse heart (F), rat heart (G) whole cell lysates.



Immunohistochemical analysis of PFKM staining in human breast cancer formalin fixed paraffin embedded tissue section. The section was pre-treated using heat mediated antigen retrieval with sodium citrate buffer (pH 6.0). The section was then incubated with the antibody at room temperature and detected using an HRP conjugated compact polymer system. DAB was used as the chromogen. The section was then counterstained with haematoxylin and mounted with DPX.

Anti-PFKM Antibody - Background

KLH-conjugated synthetic peptide encompassing a sequence within the center region of human

PFKM. The exact sequence is proprietary.