

**Anti-PPT Antibody**  
**Rabbit polyclonal antibody to PPT**  
**Catalog # AP60500****Specification**

---

**Anti-PPT Antibody - Product Information**

Application	WB, IH
Primary Accession	<a href="#">P50897</a>
Reactivity	Human, Mouse, Rat, Monkey, Bovine
Host	Rabbit
Clonality	Polyclonal
Calculated MW	34193

**Anti-PPT Antibody - Additional Information****Gene ID** 5538**Other Names**

PPT; Palmitoyl-protein thioesterase 1; PPT-1; Palmitoyl-protein hydrolase 1

**Target/Specificity**

Recognizes endogenous levels of PPT protein.

**Dilution**

WB~~WB (1/500 - 1/1000), IH (1/100 - 1/200)

IH~~WB (1/500 - 1/1000), IH (1/100 - 1/200)

**Format**

Liquid in 0.42% Potassium phosphate, 0.87% Sodium chloride, pH 7.3, 30% glycerol, and 0.09% (W/V) sodium azide.

**Storage**

Store at -20 °C. Stable for 12 months from date of receipt

**Anti-PPT Antibody - Protein Information****Name** PPT1**Synonyms** CLN1 {ECO:0000303|PubMed:19941651}, PPT**Function**

Removes thioester-linked fatty acyl groups such as palmitate from modified cysteine residues in proteins or peptides during lysosomal degradation. Prefers acyl chain lengths of 14 to 18 carbons (PubMed:&lt;a href="http://www.uniprot.org/citations/8816748" target="\_blank"&gt;8816748&lt;/a&gt;).

**Cellular Location**

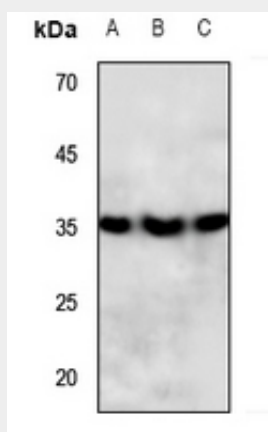
Lysosome. Secreted {ECO:0000250|UniProtKB:P45478}

## Anti-PPT Antibody - Protocols

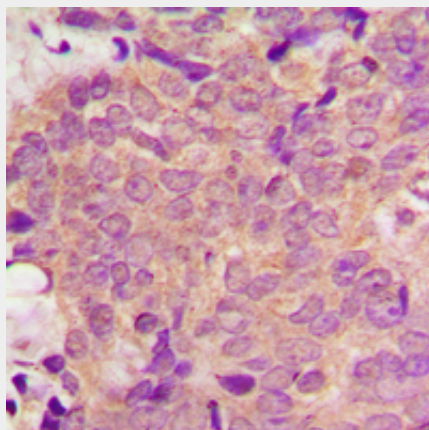
Provided below are standard protocols that you may find useful for product applications.

- [Western Blot](#)
- [Blocking Peptides](#)
- [Dot Blot](#)
- [Immunohistochemistry](#)
- [Immunofluorescence](#)
- [Immunoprecipitation](#)
- [Flow Cytometry](#)
- [Cell Culture](#)

## Anti-PPT Antibody - Images



Western blot analysis of PPT expression in mouse spleen (A), rat liver (B), rat spleen (C) whole cell lysates.



Immunohistochemical analysis of PPT staining in human breast cancer formalin fixed paraffin embedded tissue section. The section was pre-treated using heat mediated antigen retrieval with sodium citrate buffer (pH 6.0). The section was then incubated with the antibody at room temperature and detected using an HRP conjugated compact polymer system. DAB was used as the chromogen. The section was then counterstained with haematoxylin and mounted with DPX.

## Anti-PPT Antibody - Background

KLH-conjugated synthetic peptide encompassing a sequence within the N-term region of human

PPT. The exact sequence is proprietary.