

**Anti-RAB8B Antibody**  
**Rabbit polyclonal antibody to RAB8B**  
**Catalog # AP60504****Specification**

---

**Anti-RAB8B Antibody - Product Information**

Application	WB
Primary Accession	<a href="#">O92930</a>
Other Accession	<a href="#">P61028</a>
Reactivity	Human, Mouse, Rat, Bovine
Host	Rabbit
Clonality	Polyclonal
Calculated MW	23584

**Anti-RAB8B Antibody - Additional Information****Gene ID** 51762**Other Names**

Ras-related protein Rab-8B

**Target/Specificity**

Recognizes endogenous levels of RAB8B protein.

**Dilution**

WB~~WB (1/500 - 1/1000)

**Format**

Liquid in 0.42% Potassium phosphate, 0.87% Sodium chloride, pH 7.3, 30% glycerol, and 0.09% (W/V) sodium azide.

**Storage**

Store at -20 °C.Stable for 12 months from date of receipt

**Anti-RAB8B Antibody - Protein Information****Name** RAB8B ([HGNC:30273](#))**Function**

The small GTPases Rab are key regulators of intracellular membrane trafficking, from the formation of transport vesicles to their fusion with membranes. Rabs cycle between an inactive GDP-bound form and an active GTP-bound form that is able to recruit to membranes different sets of downstream effectors directly responsible for vesicle formation, movement, tethering and fusion (By similarity). RAB8B may be involved in polarized vesicular trafficking and neurotransmitter release (Probable). May participate in cell junction dynamics in Sertoli cells (By similarity). May also participate in the export of a subset of neosynthesized proteins through a Rab8-Rab10-Rab11-dependent endosomal export route (PubMed:<a href="http://www.uniprot.org/citations/32344433" target="\_blank">32344433</a>).

**Cellular Location**

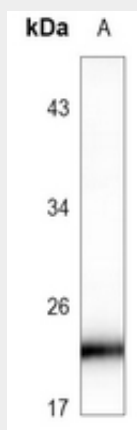
Cell membrane; Lipid-anchor; Cytoplasmic side. Cytoplasmic vesicle, phagosome. Cytoplasmic vesicle, phagosome membrane; Lipid-anchor; Cytoplasmic side. Endosome membrane.

Note=Recruited to phagosomes containing S.aureus or M.tuberculosis. Colocalized with MICAL1, GRAF1/ARHGAP26 and GRAF2/ARHGAP10 on endosomal tubules (PubMed:32344433)

**Anti-RAB8B Antibody - Protocols**

Provided below are standard protocols that you may find useful for product applications.

- [Western Blot](#)
- [Blocking Peptides](#)
- [Dot Blot](#)
- [Immunohistochemistry](#)
- [Immunofluorescence](#)
- [Immunoprecipitation](#)
- [Flow Cytometry](#)
- [Cell Culture](#)

**Anti-RAB8B Antibody - Images**

Western blot analysis of RAB8B expression in mouse spleen (A) whole cell lysates.

**Anti-RAB8B Antibody - Background**

KLH-conjugated synthetic peptide encompassing a sequence within the C-term region of human RAB8B. The exact sequence is proprietary.