

Anti-RRM2B Antibody
Rabbit polyclonal antibody to RRM2B
Catalog # AP60509**Specification**

Anti-RRM2B Antibody - Product Information

Application	WB
Primary Accession	Q7LG56
Other Accession	Q6PEE3
Reactivity	Human, Mouse, Rat, Monkey
Host	Rabbit
Clonality	Polyclonal
Calculated MW	40737

Anti-RRM2B Antibody - Additional Information**Gene ID** 50484**Other Names**

P53R2; Ribonucleoside-diphosphate reductase subunit M2 B; TP53-inducible ribonucleotide reductase M2 B; p53-inducible ribonucleotide reductase small subunit 2-like protein; p53R2

Target/Specificity

Recognizes endogenous levels of RRM2B protein.

Dilution

WB~~WB (1/500 - 1/1000)

Format

Liquid in 0.42% Potassium phosphate, 0.87% Sodium chloride, pH 7.3, 30% glycerol, and 0.09% (W/V) sodium azide.

Storage

Store at -20 °C. Stable for 12 months from date of receipt

Anti-RRM2B Antibody - Protein Information**Name** RRM2B**Synonyms** P53R2**Function**

Plays a pivotal role in cell survival by repairing damaged DNA in a p53/TP53-dependent manner. Supplies deoxyribonucleotides for DNA repair in cells arrested at G1 or G2. Contains an iron-tyrosyl free radical center required for catalysis. Forms an active ribonucleotide reductase (RNR) complex with RRM1 which is expressed both in resting and proliferating cells in response to DNA damage.

Cellular Location

Cytoplasm. Nucleus. Note=Translocates from cytoplasm to nucleus in response to DNA damage

Tissue Location

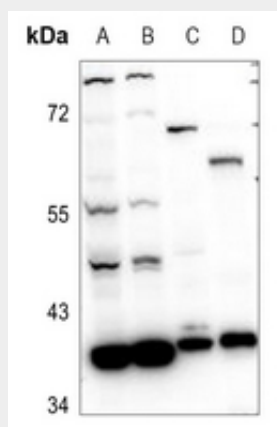
Widely expressed at a high level in skeletal muscle and at a weak level in thymus. Expressed in epithelial dysplasias and squamous cell carcinoma.

Anti-RRM2B Antibody - Protocols

Provided below are standard protocols that you may find useful for product applications.

- [Western Blot](#)
- [Blocking Peptides](#)
- [Dot Blot](#)
- [Immunohistochemistry](#)
- [Immunofluorescence](#)
- [Immunoprecipitation](#)
- [Flow Cytometry](#)
- [Cell Culture](#)

Anti-RRM2B Antibody - Images



Western blot analysis of RRM2B expression in A375 (A), HCT116 (B), mouse brain (C), rat prostate (D) whole cell lysates.

Anti-RRM2B Antibody - Background

KLH-conjugated synthetic peptide encompassing a sequence within the center region of human RRM2B. The exact sequence is proprietary.