

Anti-UBR1 Antibody
Rabbit polyclonal antibody to UBR1
Catalog # AP60521**Specification**

Anti-UBR1 Antibody - Product Information

Application	WB, IH
Primary Accession	Q8I WV7
Reactivity	Human, Mouse, Rat, Monkey
Host	Rabbit
Clonality	Polyclonal
Calculated MW	200211

Anti-UBR1 Antibody - Additional Information**Gene ID** 197131**Other Names**

E3 ubiquitin-protein ligase UBR1; N-recognin-1; Ubiquitin-protein ligase E3-alpha-1;
Ubiquitin-protein ligase E3-alpha-I

Target/Specificity

Recognizes endogenous levels of UBR1 protein.

Dilution

WB~~WB (1/500 - 1/1000), IH (1/100 - 1/200)

IH~~WB (1/500 - 1/1000), IH (1/100 - 1/200)

Format

Liquid in 0.42% Potassium phosphate, 0.87% Sodium chloride, pH 7.3, 30% glycerol, and 0.09% (W/V) sodium azide.

Storage

Store at -20 °C. Stable for 12 months from date of receipt

Anti-UBR1 Antibody - Protein Information**Name** UBR1**Function**

E3 ubiquitin-protein ligase which is a component of the N-end rule pathway. Recognizes and binds to proteins bearing specific N- terminal residues that are destabilizing according to the N-end rule, leading to their ubiquitination and subsequent degradation. May be involved in pancreatic homeostasis. Binds leucine and is a negative regulator of the leucine-mTOR signaling pathway, thereby controlling cell growth.

Cellular Location

Cytoplasm, cytosol.

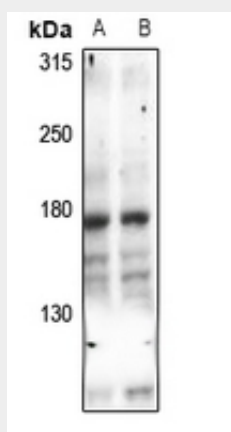
Tissue Location

Broadly expressed, with highest levels in skeletal muscle, kidney and pancreas. Present in acinar cells of the pancreas (at protein level).

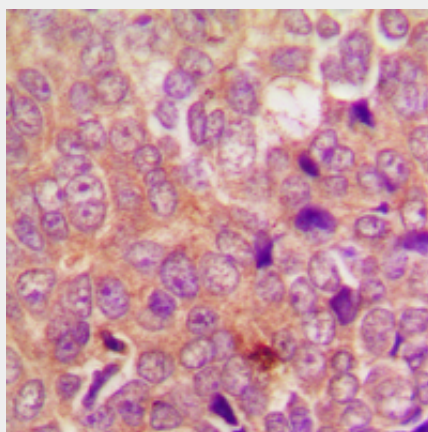
Anti-UBR1 Antibody - Protocols

Provided below are standard protocols that you may find useful for product applications.

- [Western Blot](#)
- [Blocking Peptides](#)
- [Dot Blot](#)
- [Immunohistochemistry](#)
- [Immunofluorescence](#)
- [Immunoprecipitation](#)
- [Flow Cytometry](#)
- [Cell Culture](#)

Anti-UBR1 Antibody - Images

Western blot analysis of UBR1 expression in COS7 (A), HEK293T (B) whole cell lysates.



Immunohistochemical analysis of UBR1 staining in human breast cancer formalin fixed paraffin embedded tissue section. The section was pre-treated using heat mediated antigen retrieval with sodium citrate buffer (pH 6.0). The section was then incubated with the antibody at room temperature and detected using an HRP conjugated compact polymer system. DAB was used as the chromogen. The section was then counterstained with haematoxylin and mounted with DPX.

Anti-UBR1 Antibody - Background

KLH-conjugated synthetic peptide encompassing a sequence within the center region of human UBR1. The exact sequence is proprietary.