

Anti-ACLY Antibody
Rabbit polyclonal antibody to ACLY
Catalog # AP60530**Specification**

Anti-ACLY Antibody - Product Information

Application	WB, IH, IF
Primary Accession	P53396
Other Accession	Q91V92
Reactivity	Human, Mouse, Rat, Pig, Bovine
Host	Rabbit
Clonality	Polyclonal
Calculated MW	120839

Anti-ACLY Antibody - Additional Information**Gene ID** 47**Other Names**

ATP-citrate synthase; ATP-citrate (pro-S-)-lyase; ACL; Citrate cleavage enzyme

Target/Specificity

Recognizes endogenous levels of ACLY protein.

Dilution

WB~~E (1/5000 - 1/10000), WB (1/500 - 1/1000), IH (1/100 - 1/200), IF/IC (1/100 - 1/500)
IH~~E (1/5000 - 1/10000), WB (1/500 - 1/1000), IH (1/100 - 1/200), IF/IC (1/100 - 1/500)
IF~~E (1/5000 - 1/10000), WB (1/500 - 1/1000), IH (1/100 - 1/200), IF/IC (1/100 - 1/500)

Format

Liquid in 0.42% Potassium phosphate, 0.87% Sodium chloride, pH 7.3, 30% glycerol, and 0.09% (W/V) sodium azide.

Storage

Store at -20 °C. Stable for 12 months from date of receipt

Anti-ACLY Antibody - Protein Information**Name** ACLY**Function**

Catalyzes the cleavage of citrate into oxaloacetate and acetyl-CoA, the latter serving as common substrate for de novo cholesterol and fatty acid synthesis.

Cellular Location

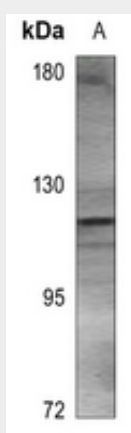
Cytoplasm, cytosol.

Anti-ACLY Antibody - Protocols

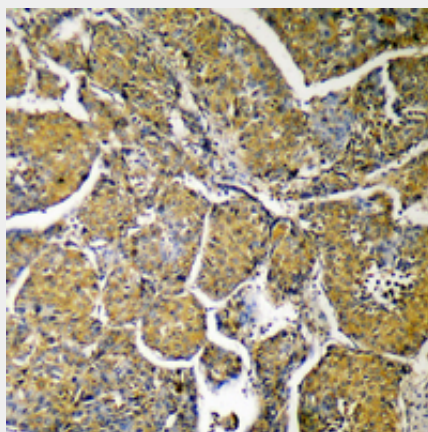
Provided below are standard protocols that you may find useful for product applications.

- [Western Blot](#)
- [Blocking Peptides](#)
- [Dot Blot](#)
- [Immunohistochemistry](#)
- [Immunofluorescence](#)
- [Immunoprecipitation](#)
- [Flow Cytometry](#)
- [Cell Culture](#)

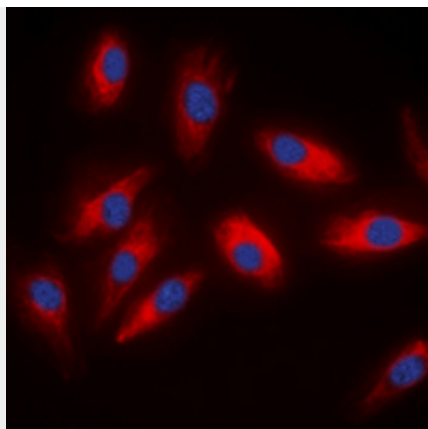
Anti-ACLY Antibody - Images



Western blot analysis of ACLY expression in C6 (A) whole cell lysates.



Immunohistochemical analysis of ACLY staining in human liver formalin fixed paraffin embedded tissue section. The section was pre-treated using heat mediated antigen retrieval with sodium citrate buffer (pH 6.0). The section was then incubated with the antibody at room temperature and detected using an HRP conjugated compact polymer system. DAB was used as the chromogen. The section was then counterstained with haematoxylin and mounted with DPX.



Immunofluorescent analysis of ACLY staining in HeLa cells. Formalin-fixed cells were permeabilized with 0.1% Triton X-100 in TBS for 5-10 minutes and blocked with 3% BSA-PBS for 30 minutes at room temperature. Cells were probed with the primary antibody in 3% BSA-PBS and incubated overnight at 4 °C in a humidified chamber. Cells were washed with PBST and incubated with a DyLight 594-conjugated secondary antibody (red) in PBS at room temperature in the dark. DAPI was used to stain the cell nuclei (blue).

Anti-ACLY Antibody - Background

KLH-conjugated synthetic peptide encompassing a sequence within the center region of human ACLY. The exact sequence is proprietary.